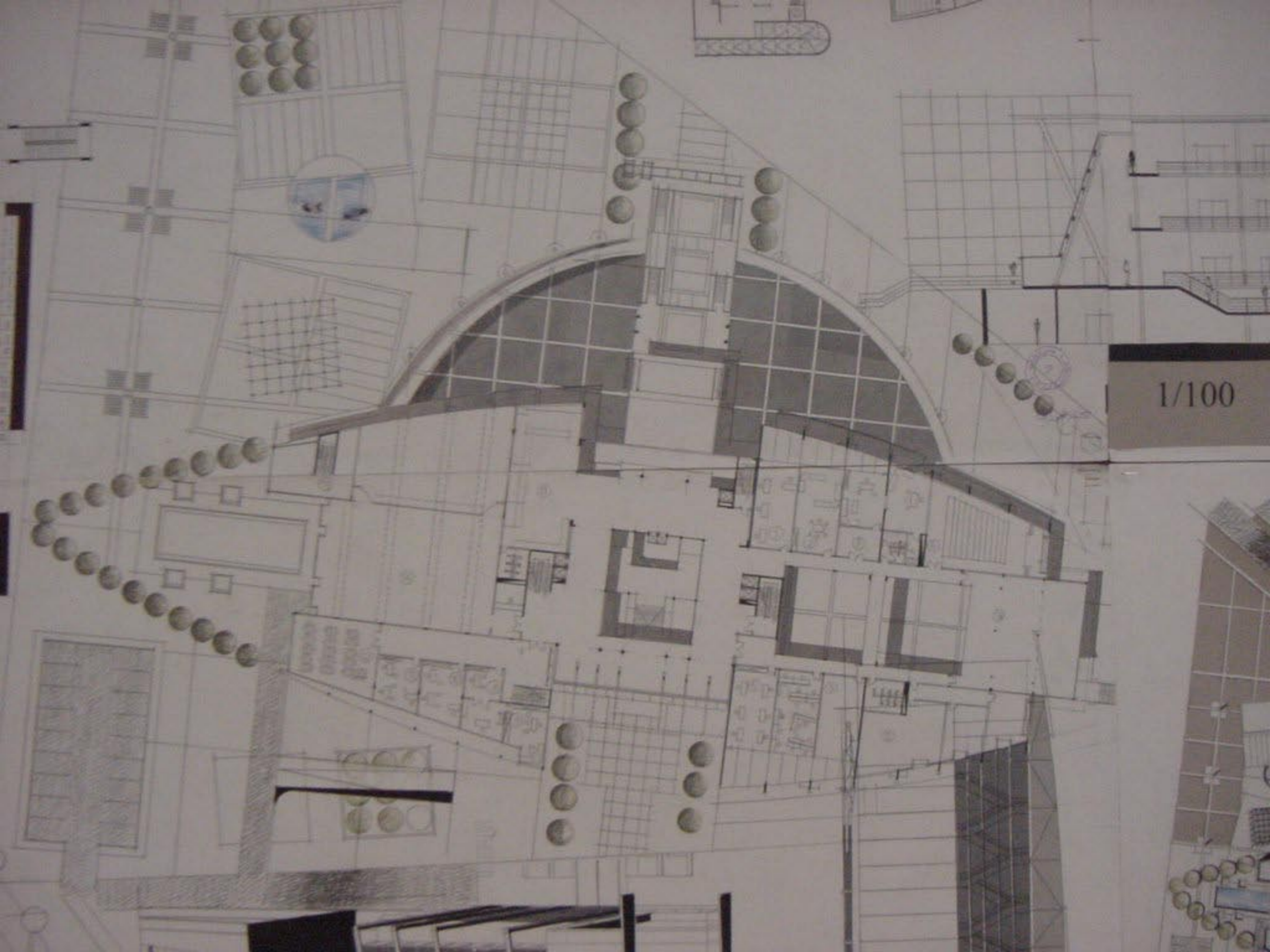


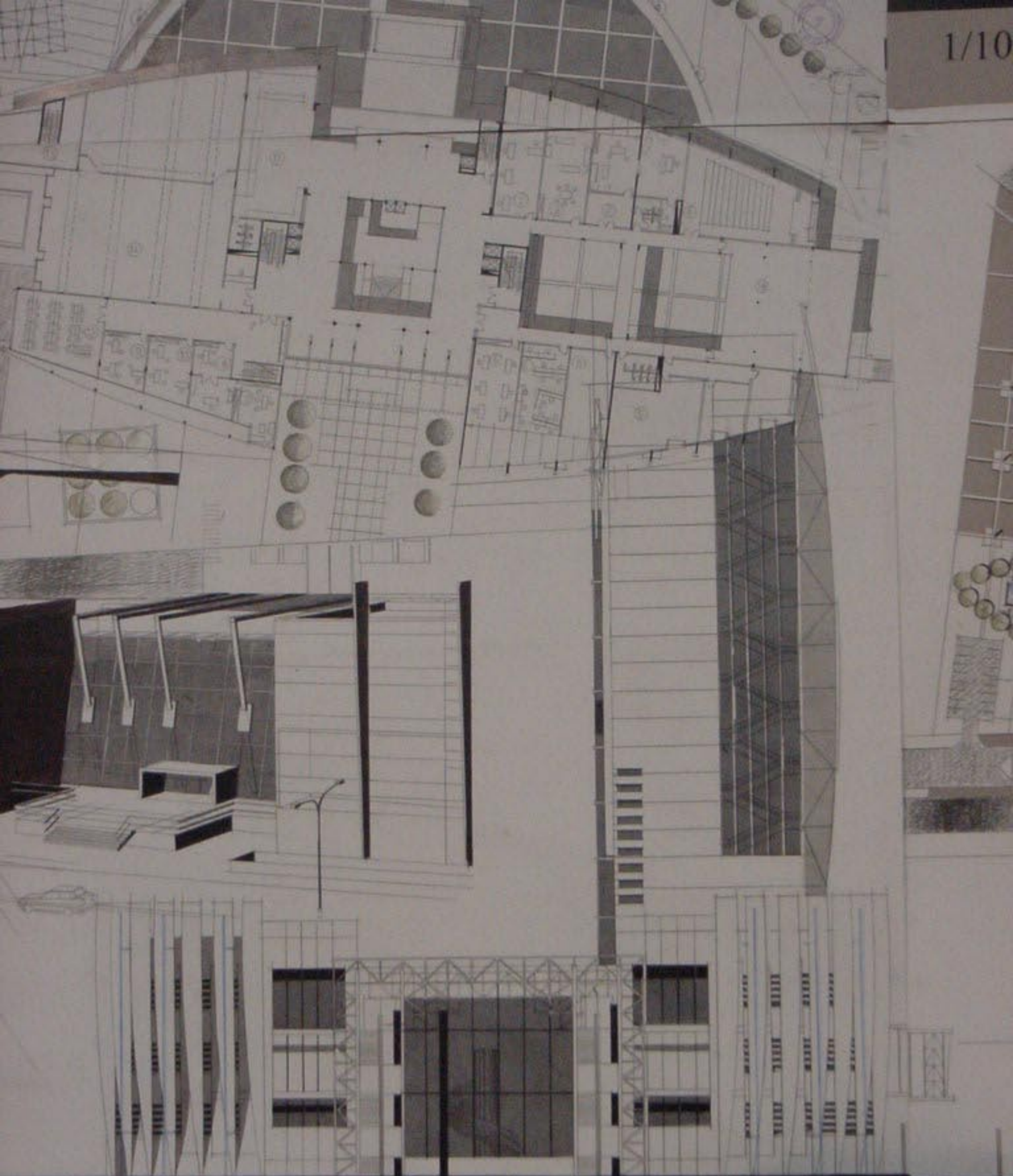
Handwritten notes in a vertical column on the right side of the drawing, possibly detailing specifications or design notes.



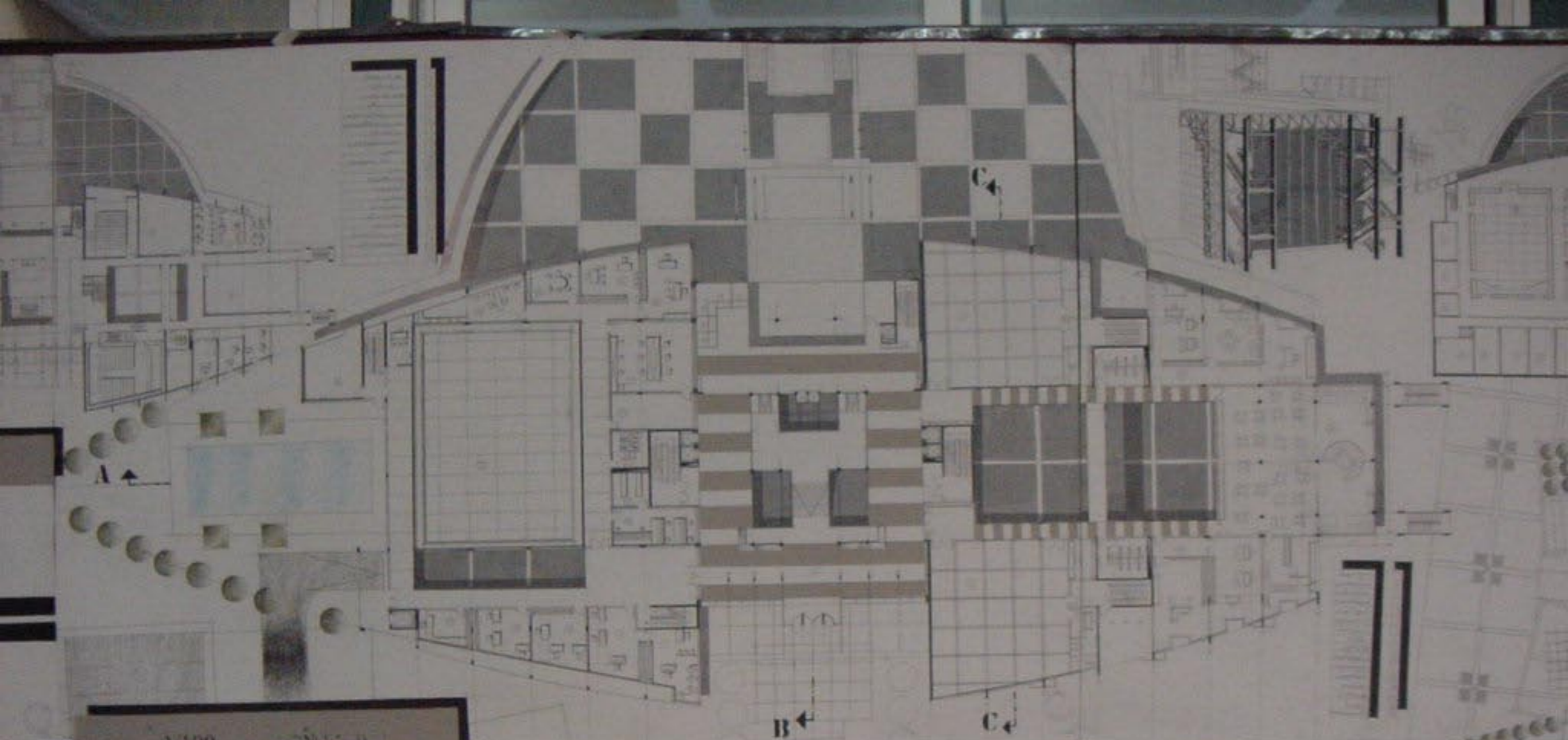


1/100

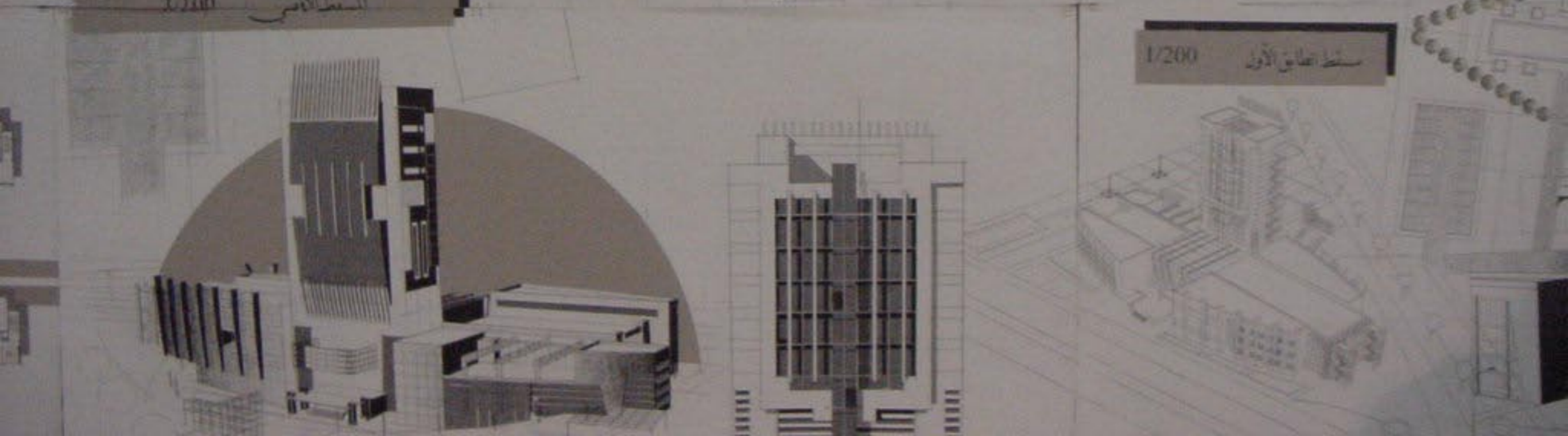






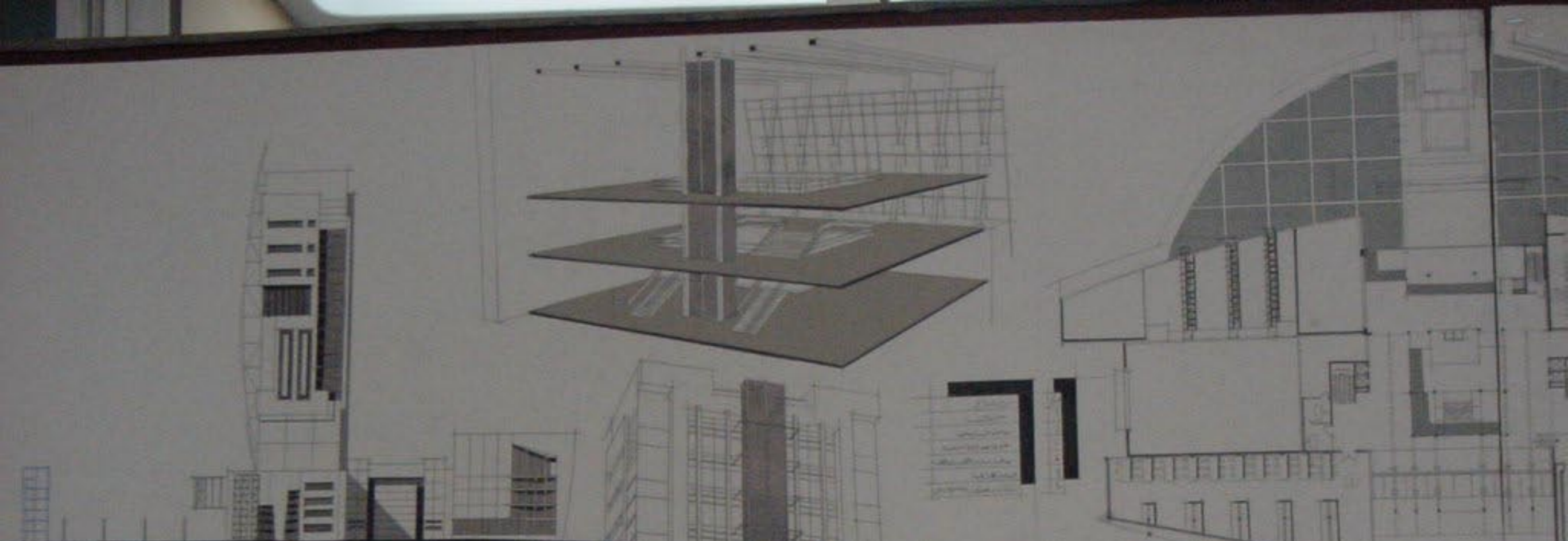


المقطع الأمامي 1/200



سقطه الطابق الأول 1/200





1/200

الواجهة الشرقية

1/200

مسقط الطابق الثاني

1/100

المقطع الأفقي A-A

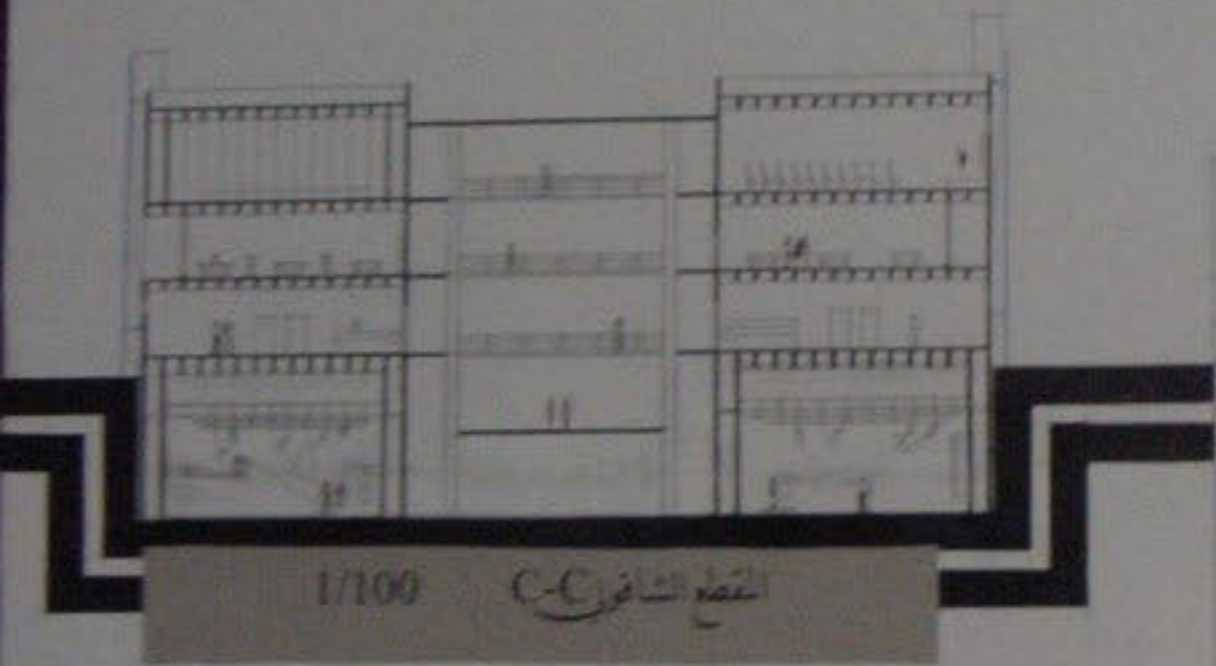




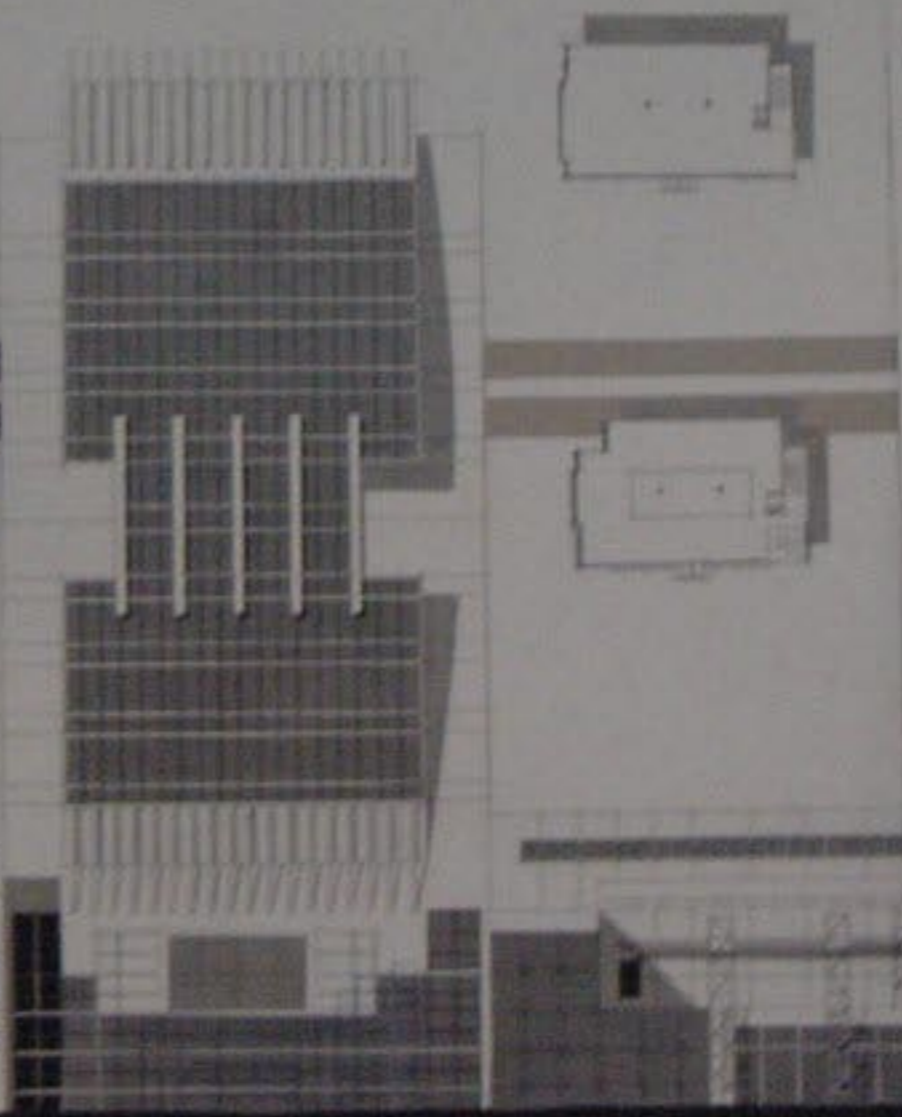
1/100 المقطع الأفقي A-A



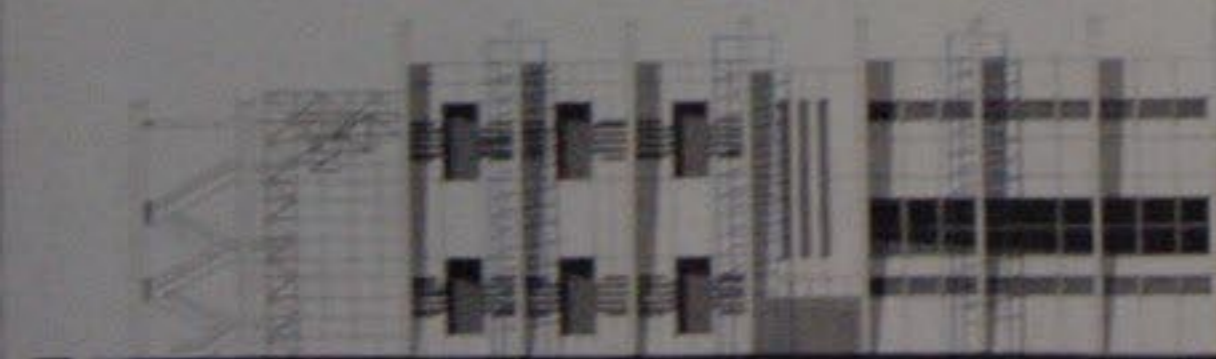
1/100 المقطع الأفقي



1/100 المقطع الشاقول C-C



1/100 الواجهة الشمالية





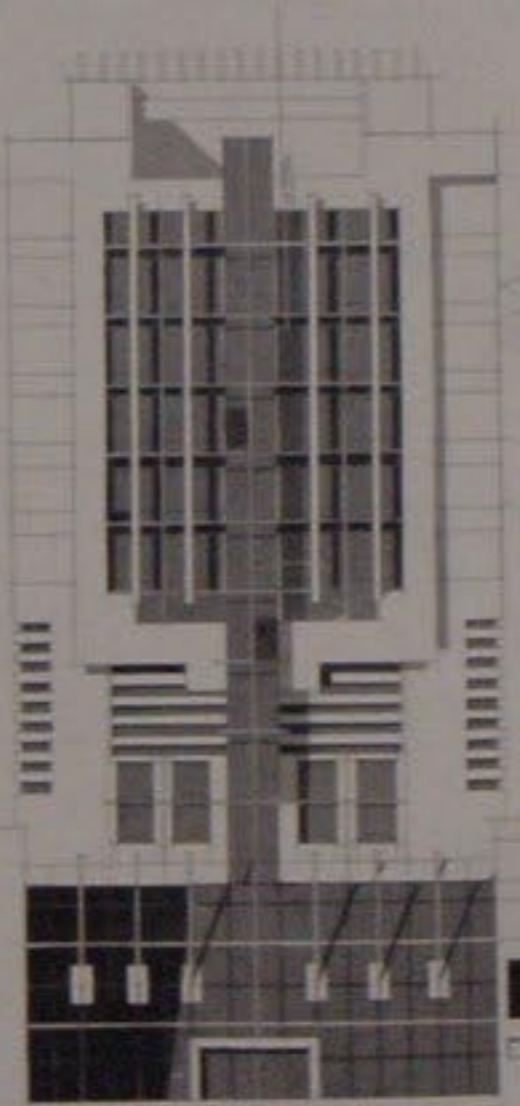
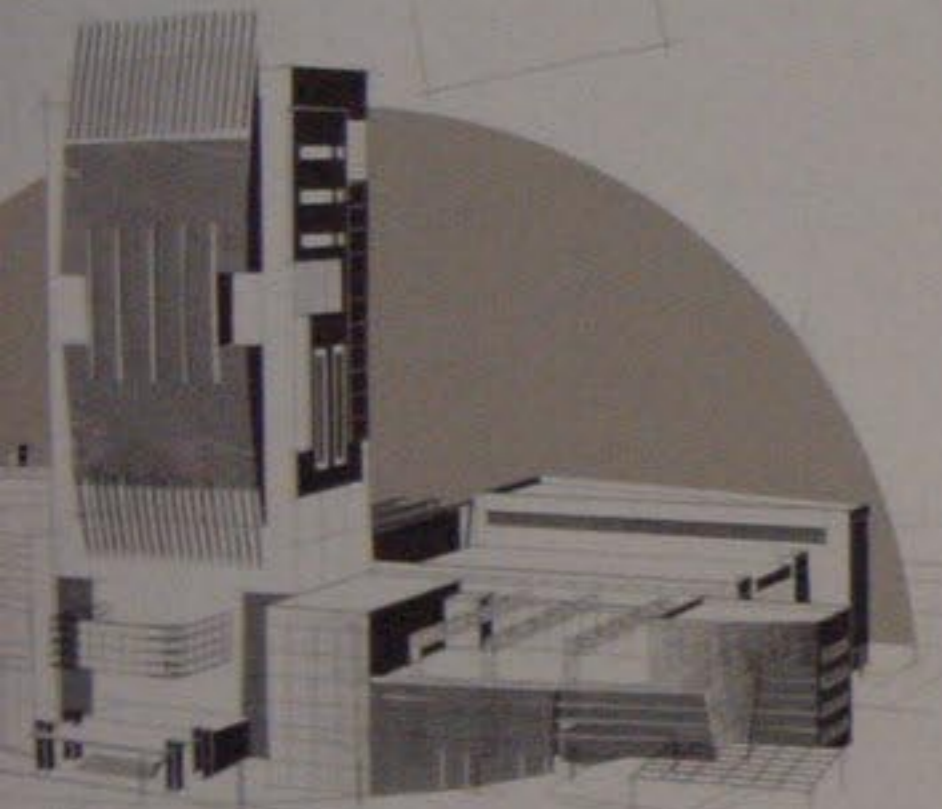
المسقط الأفقي

B ←

C ←

1/200

مسقط الخطين الأول



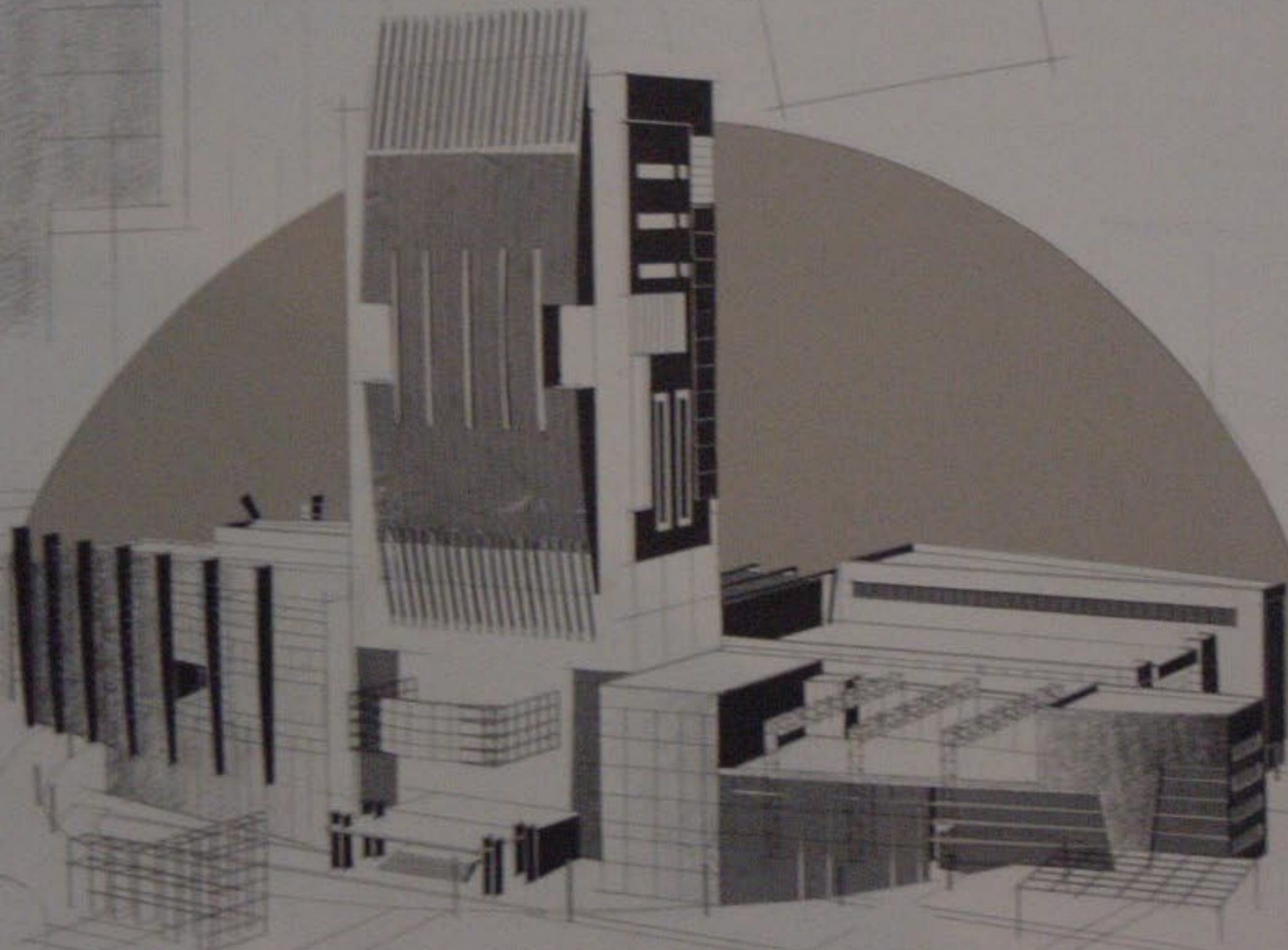
1/100

الواجهة الجنوبية



1/100

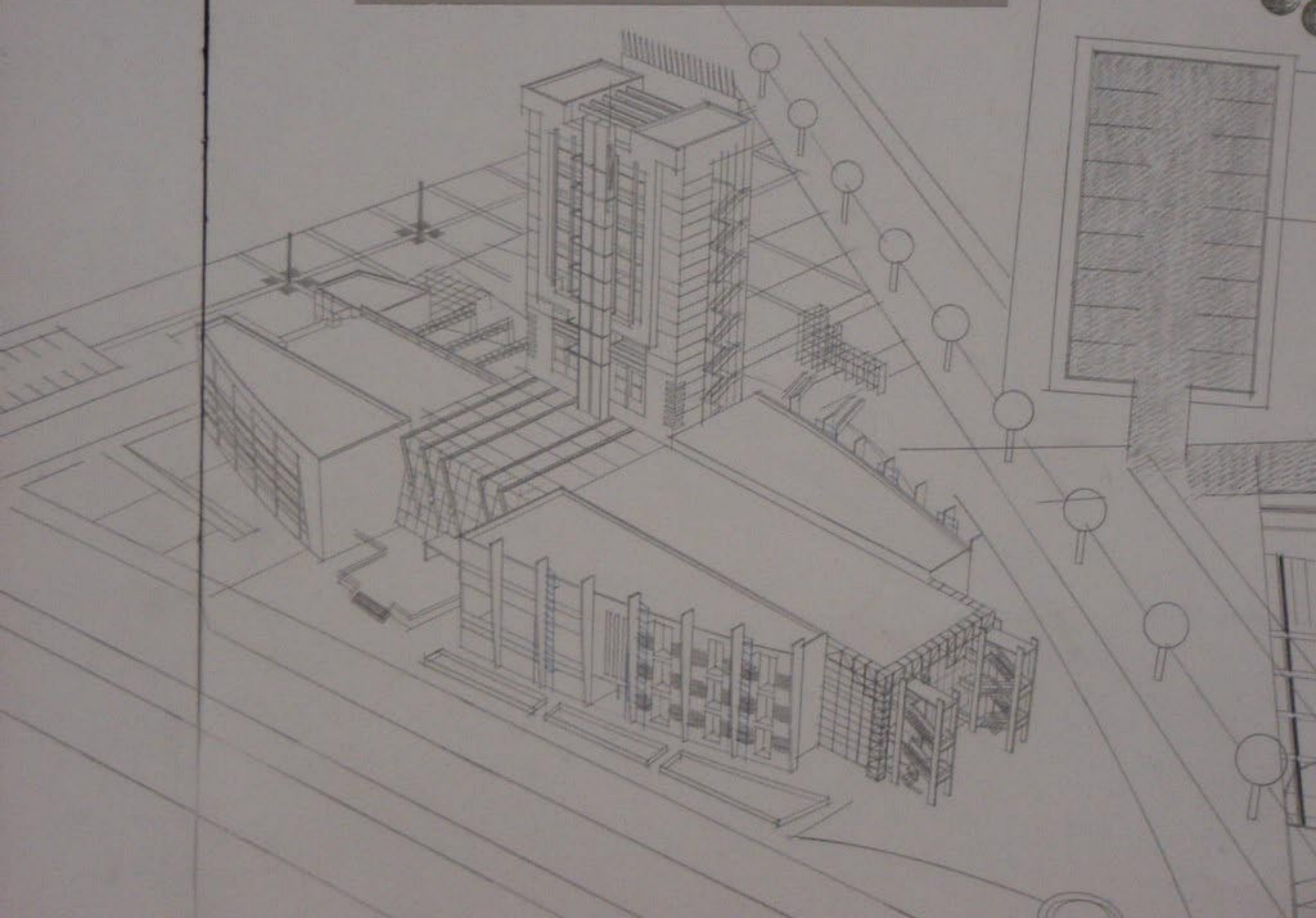
المسقط الأفقي



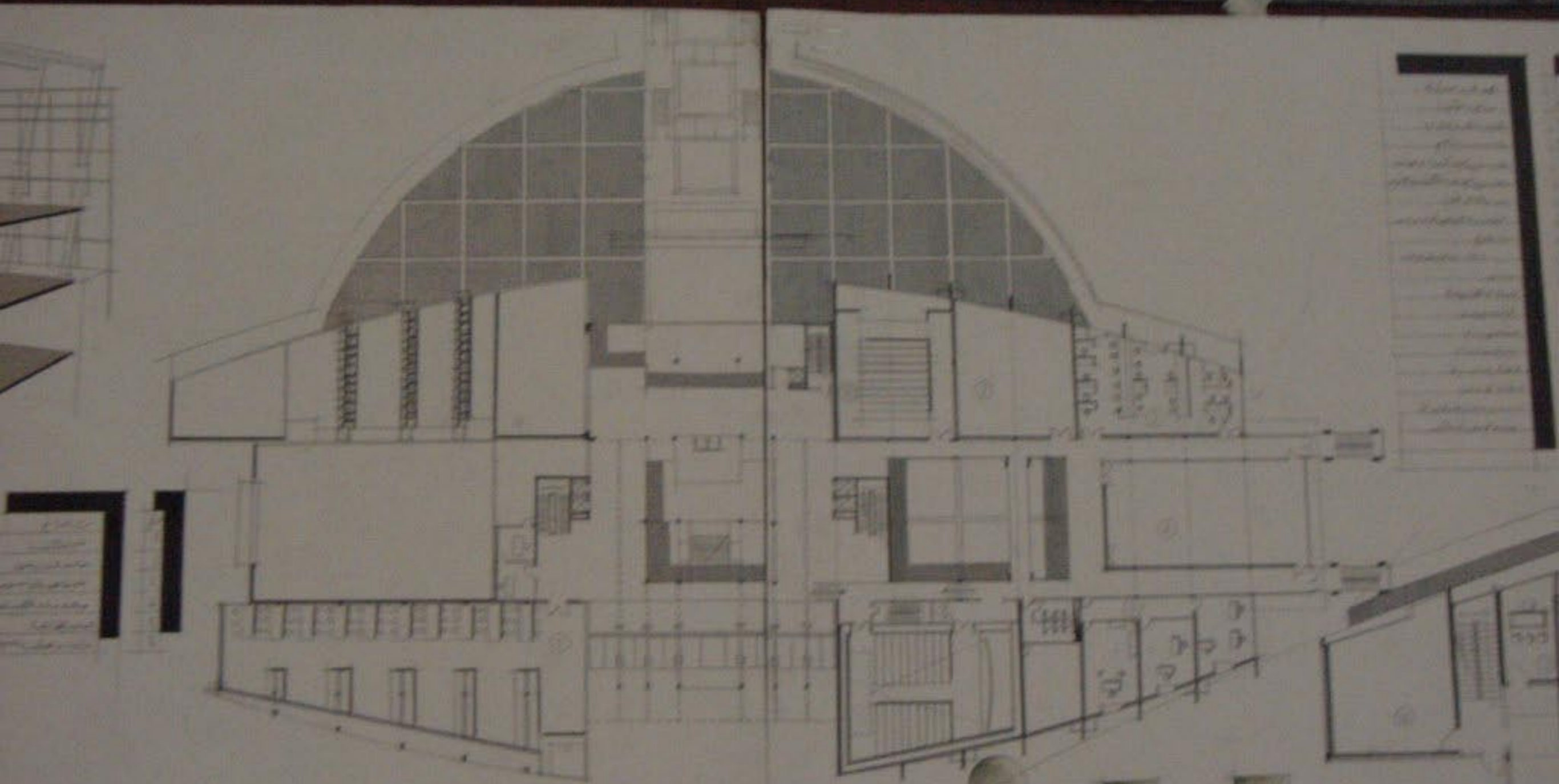


17/200

مسقط الطابق الاول







Handwritten notes in Arabic script, likely describing the architectural details or construction specifications of the drawing.

Handwritten notes in Arabic script, possibly providing additional context or specifications for the drawing.

1/200

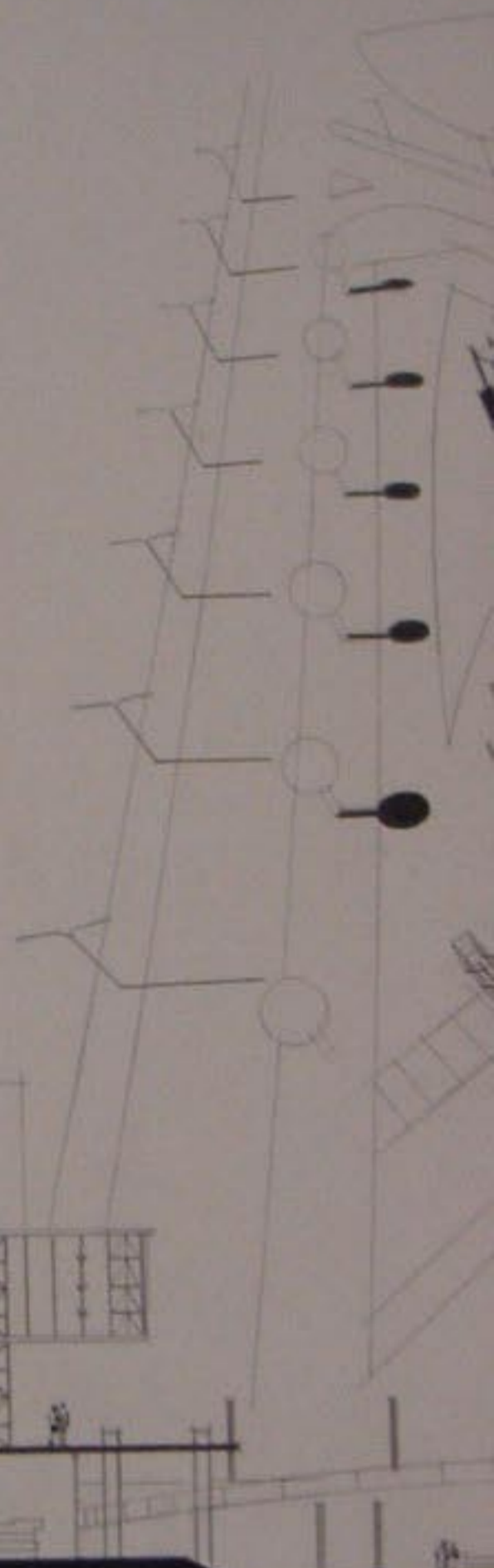
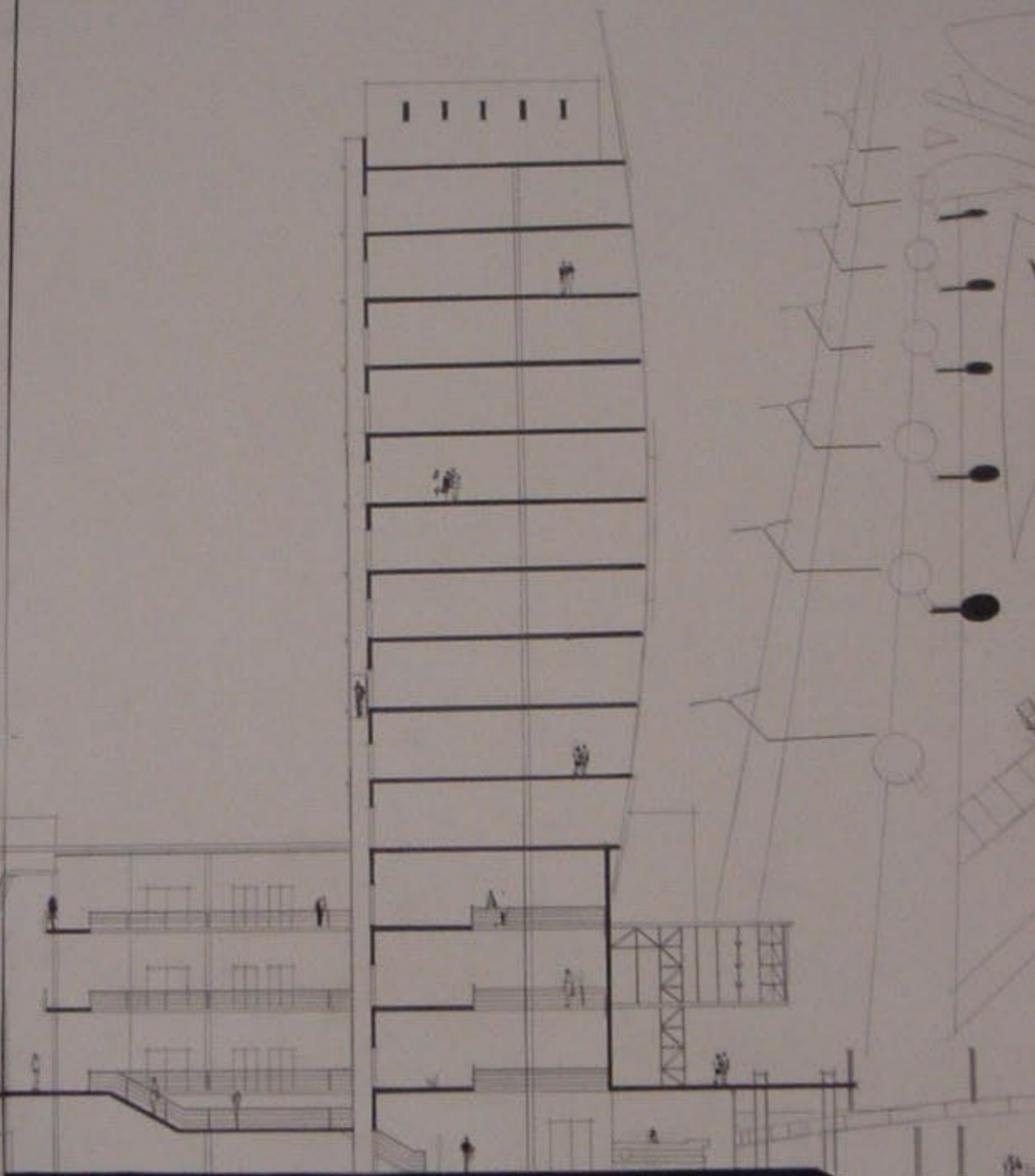
مسقط الطابق الثاني











1/100 B-B المقطع الشاقولي

1/100

B-B المقطع الشاقولي



