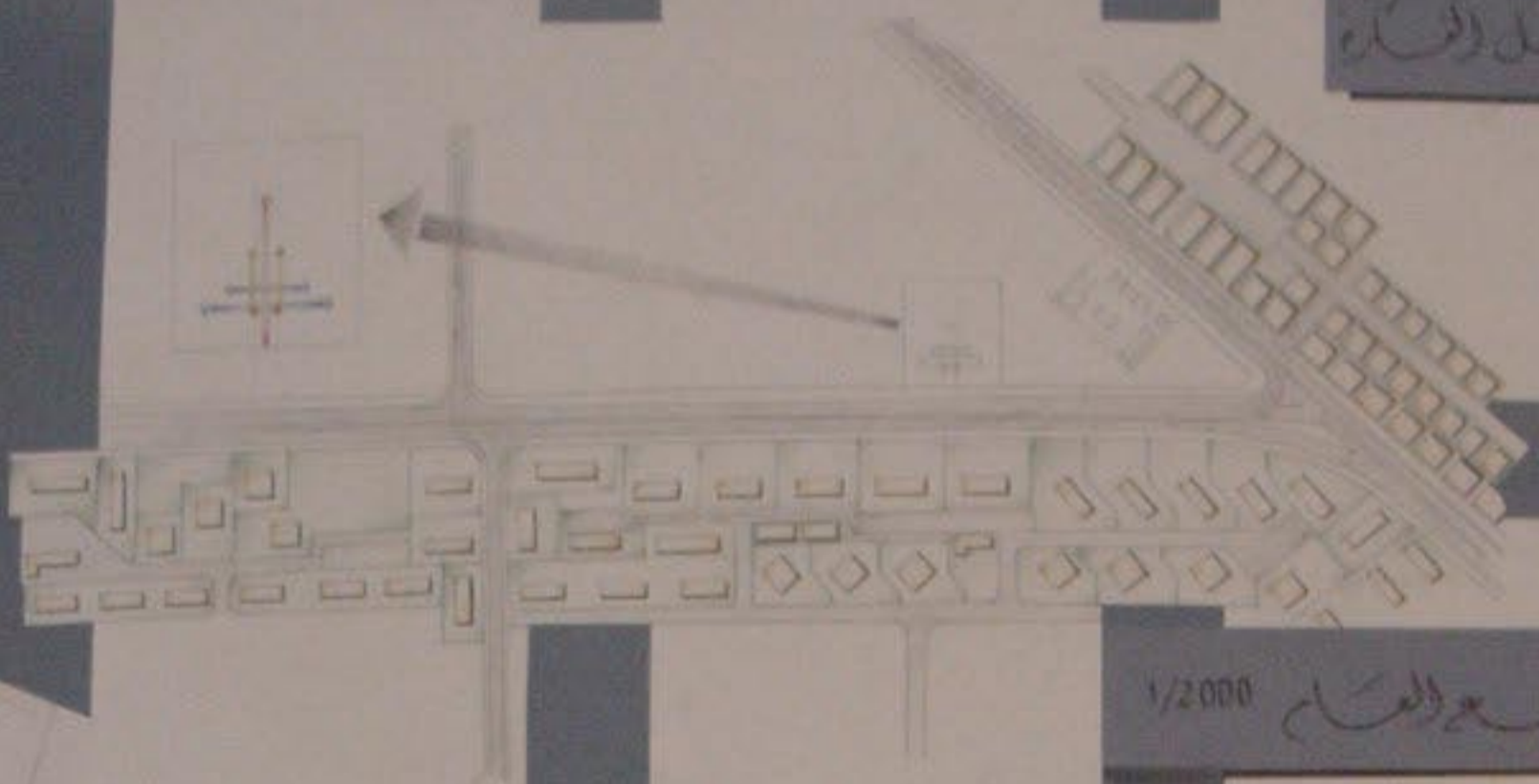
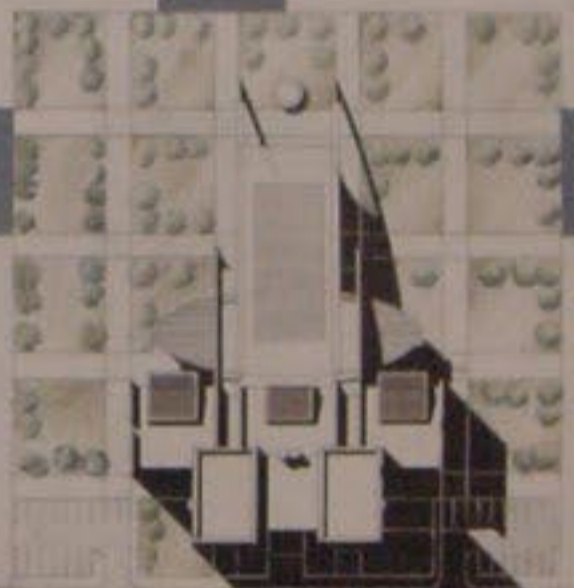
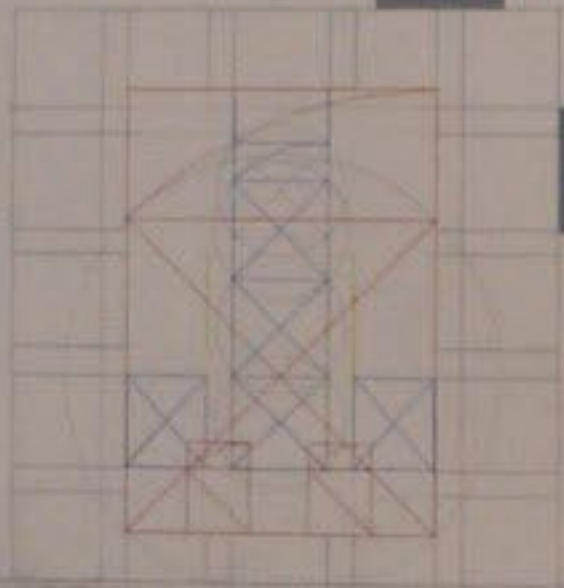


قلب المدينة



الموقع العام 1/2000



الموقع العام 1/500

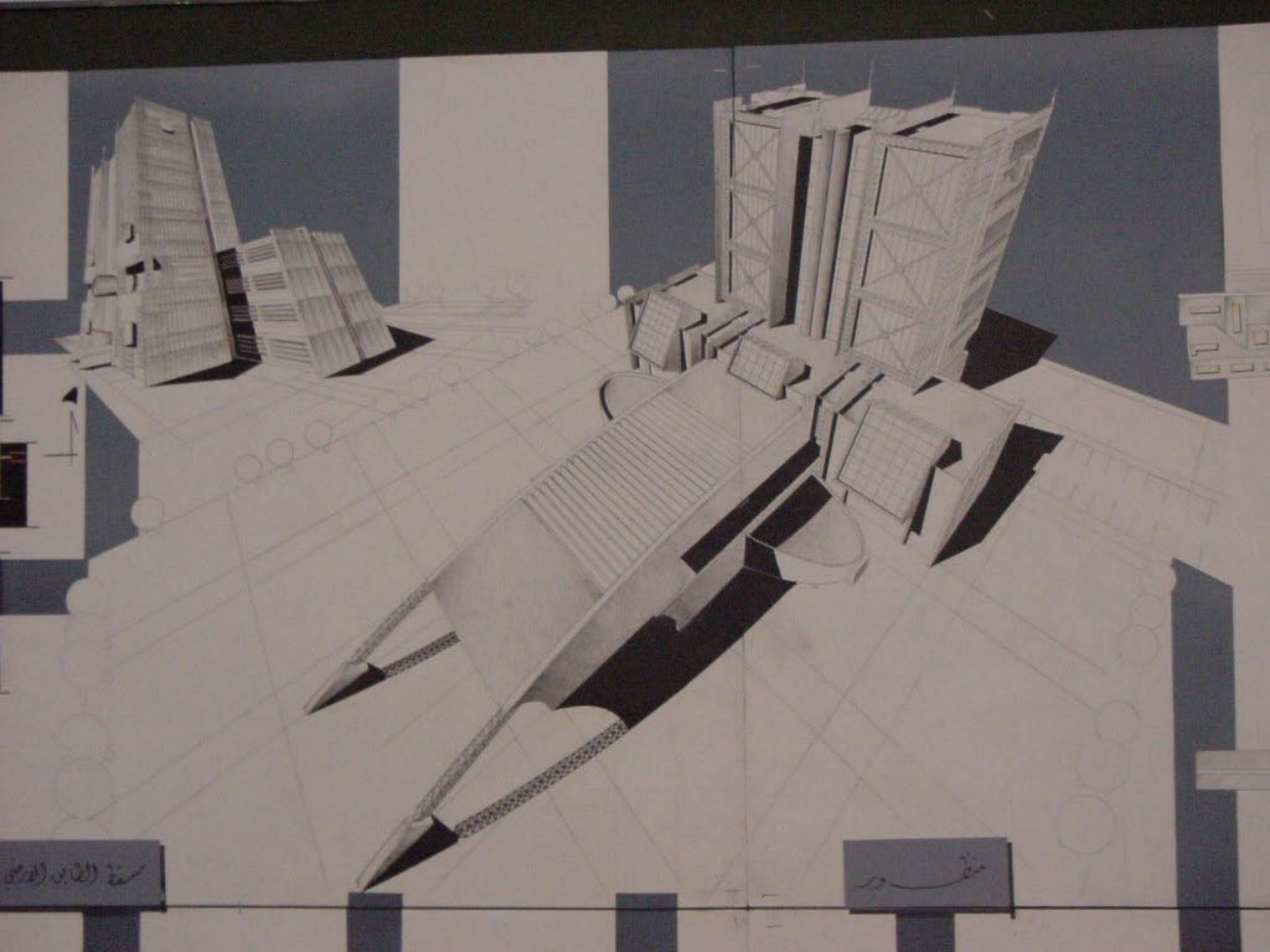
القطاع SS 1/200

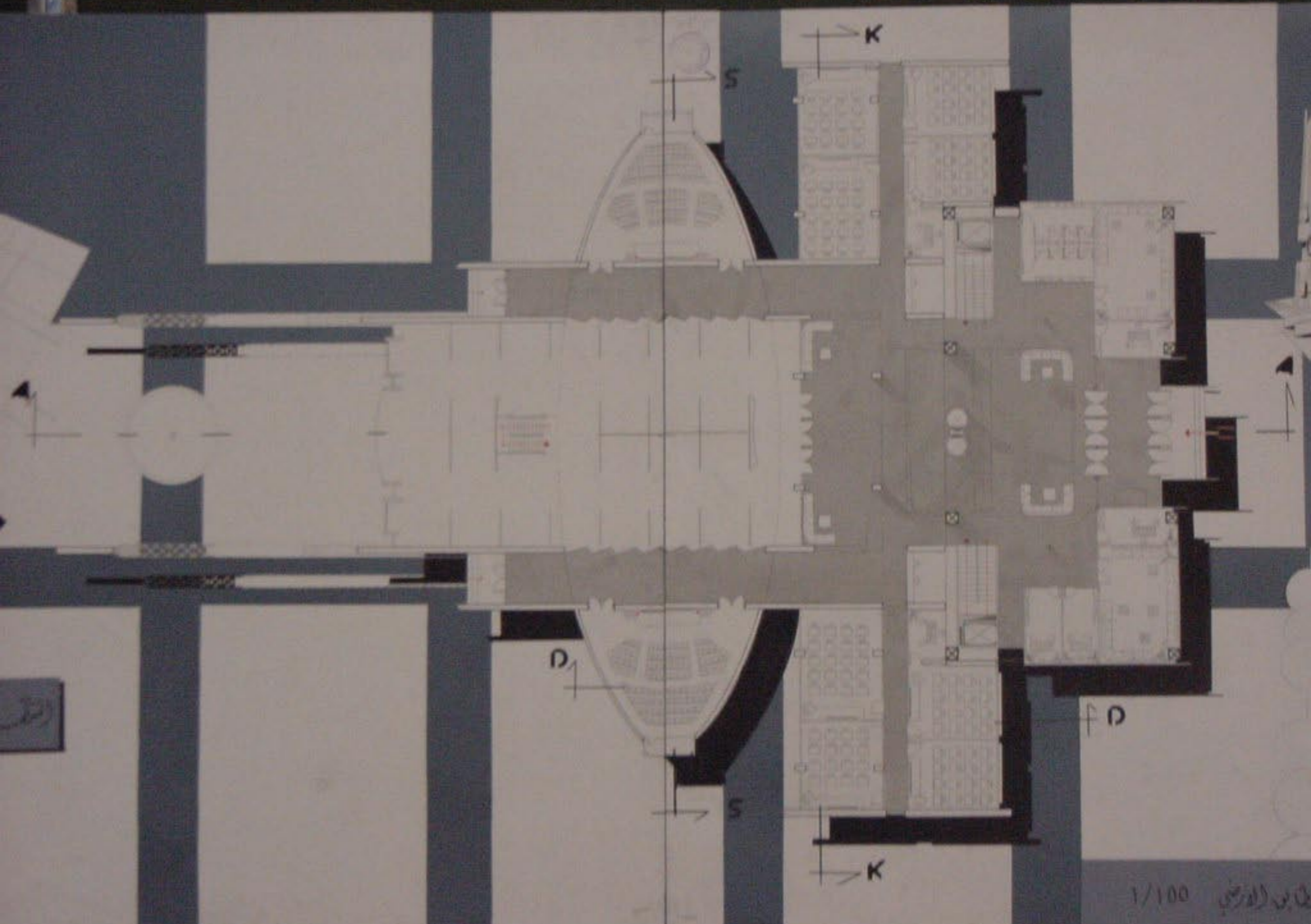
القطاع D-D 1/200

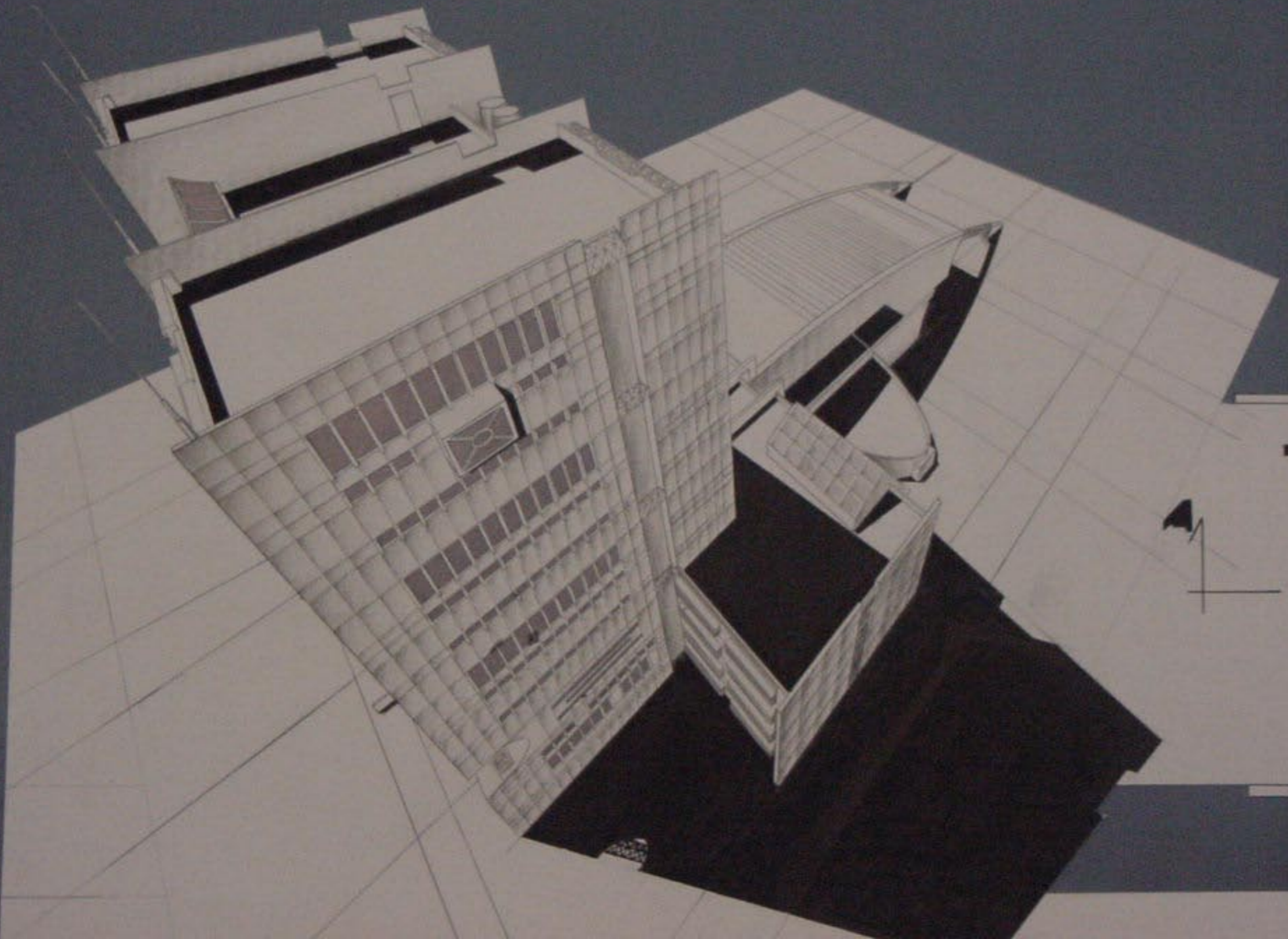


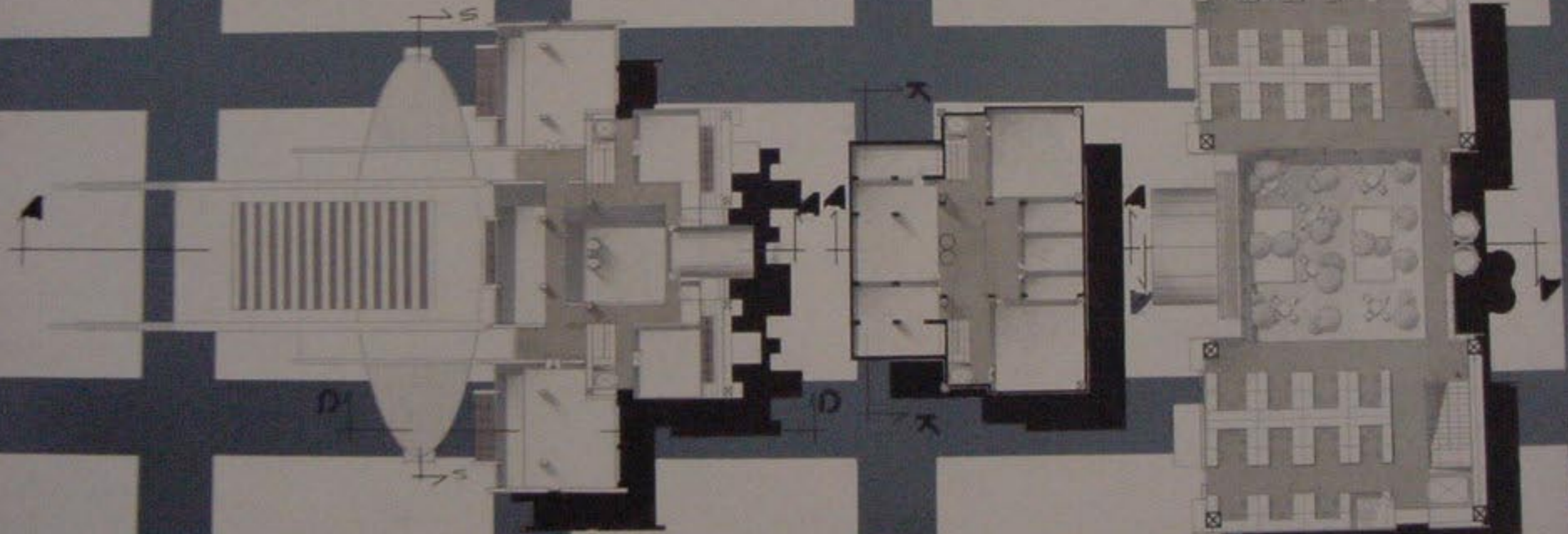
مسجد القابلي (القديم)

منارة









سقف القاعة الرئيسي 1/200

سقف حمامات القصر 1/200

سقف البرسانا الشكر 1/100

الوادي - الغدير - 1/100

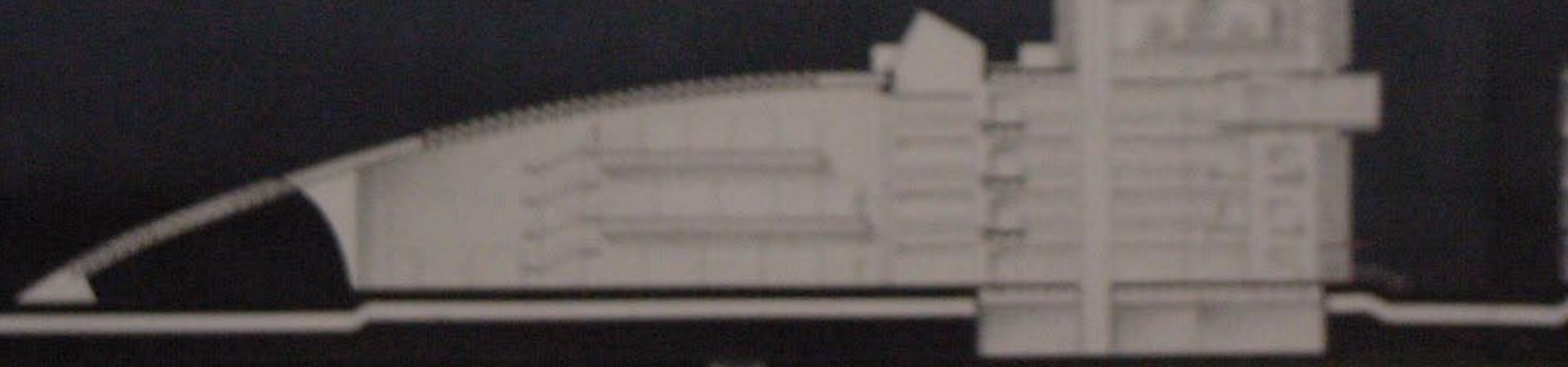


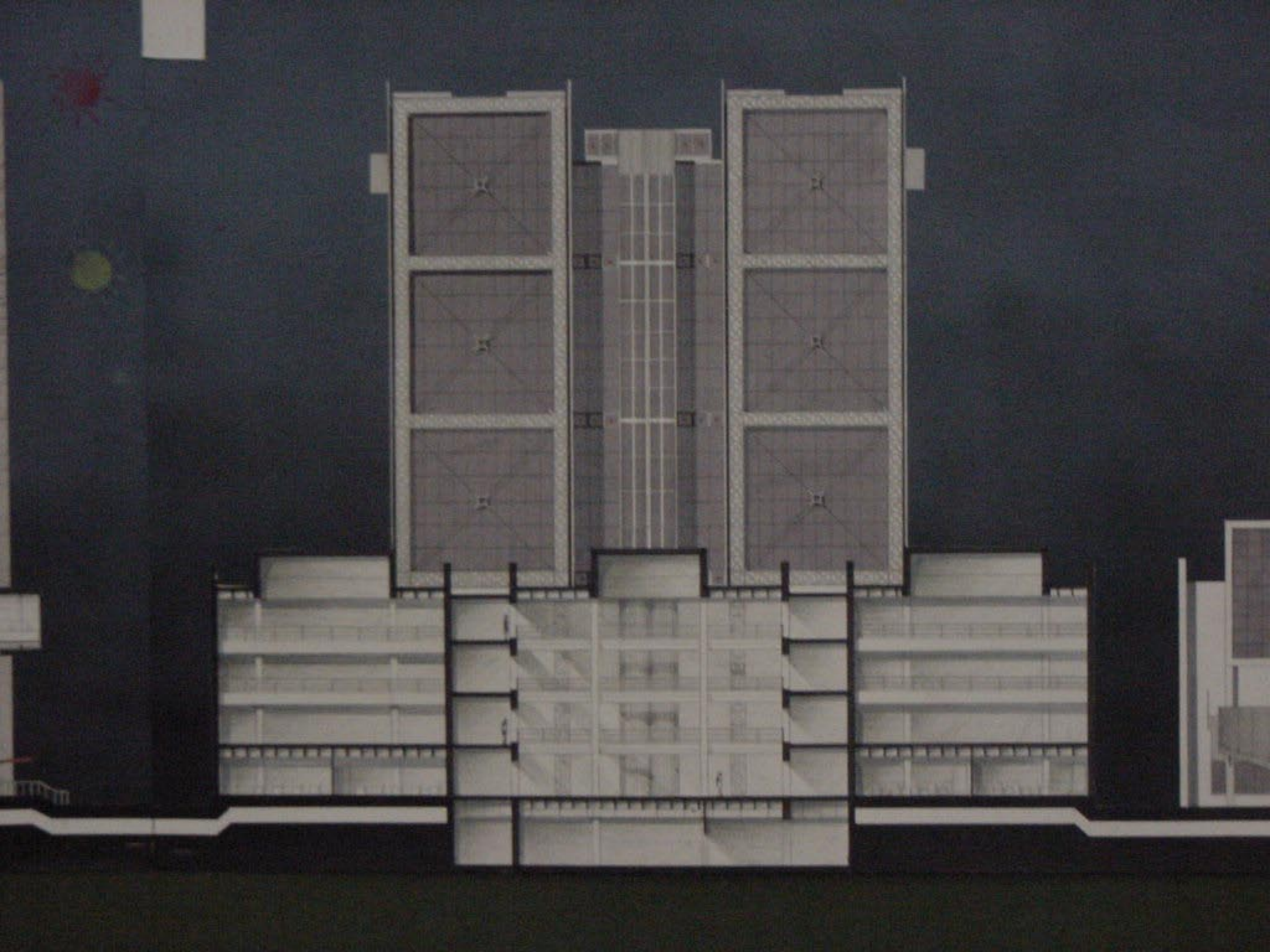
1

Handwritten notes on a small piece of paper in the top left corner.

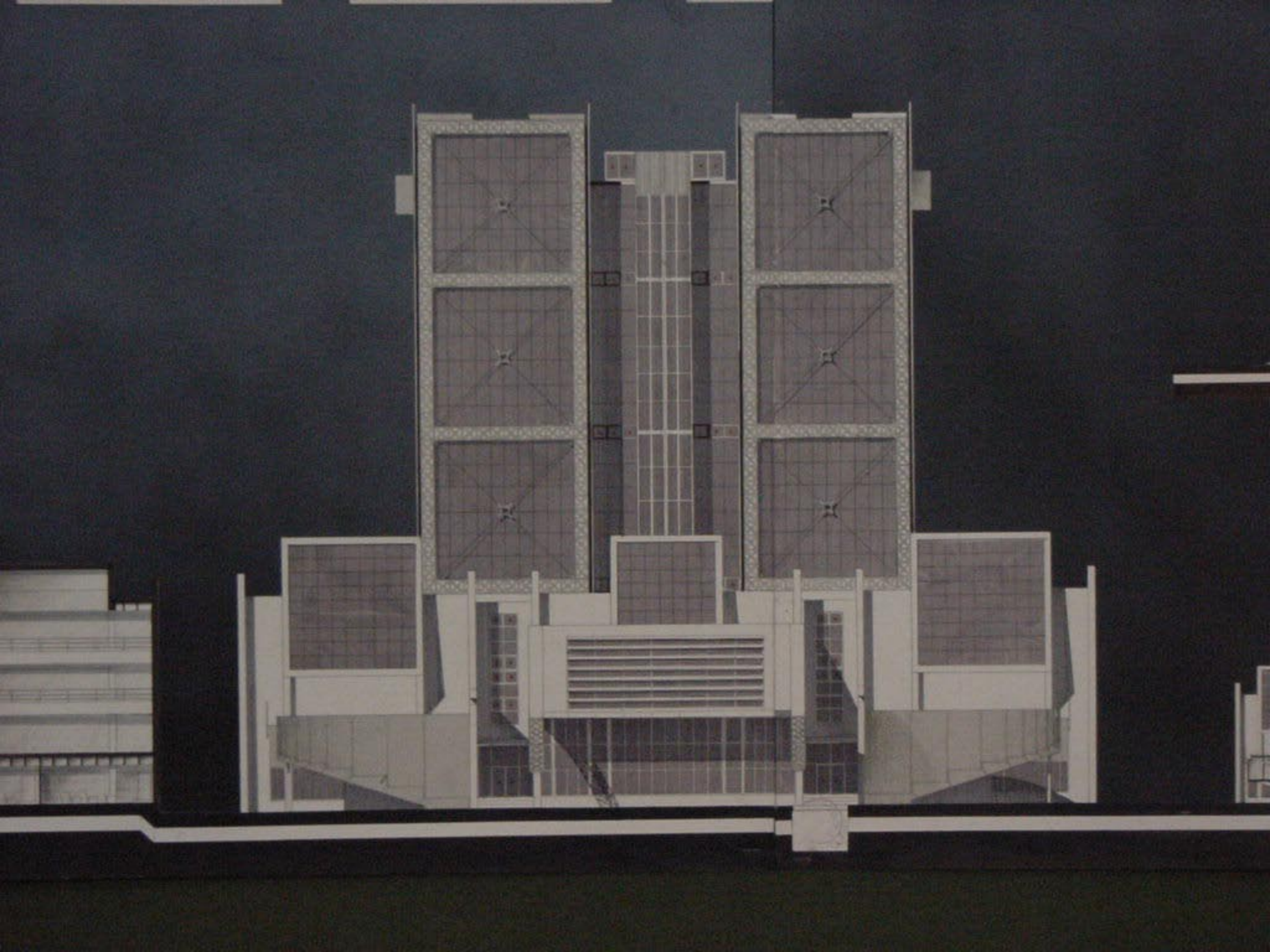
Handwritten notes on a small rectangular piece of paper in the top center.

Handwritten notes on a vertical strip of paper, possibly a page from a notebook, located on the right side.



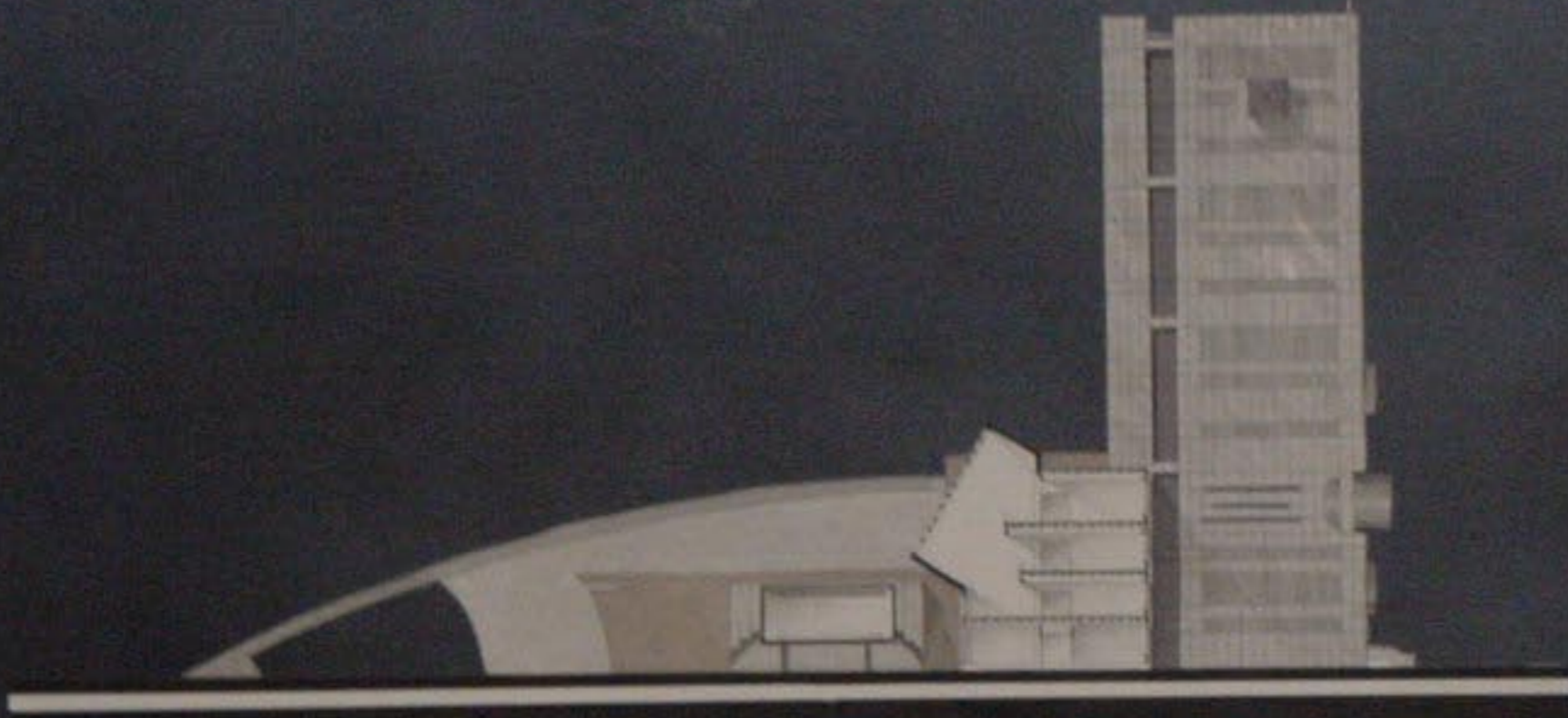




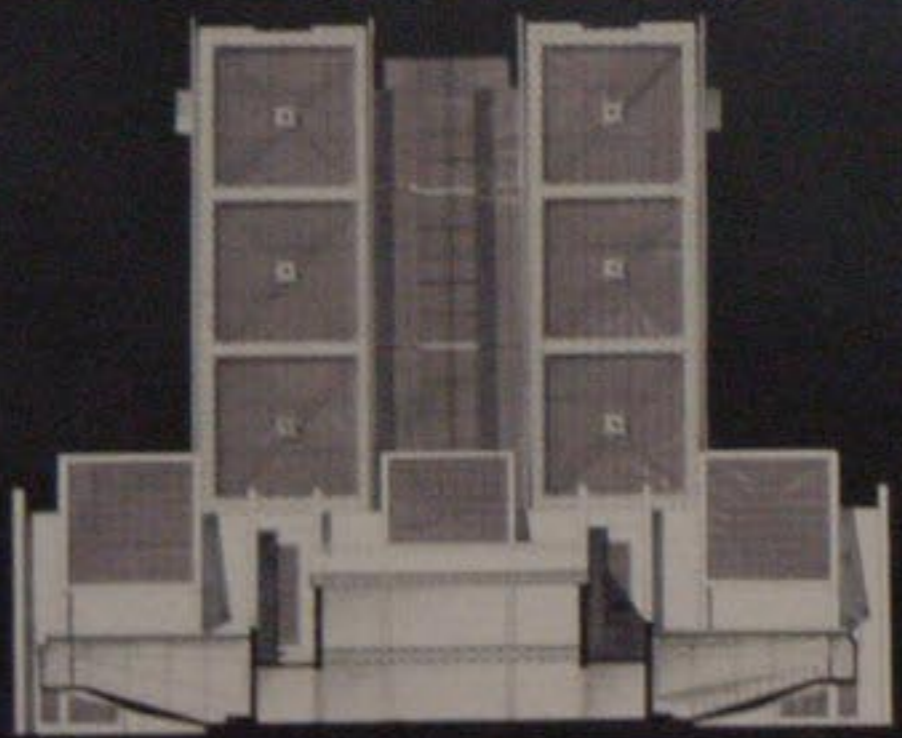


القصر SS 1/200

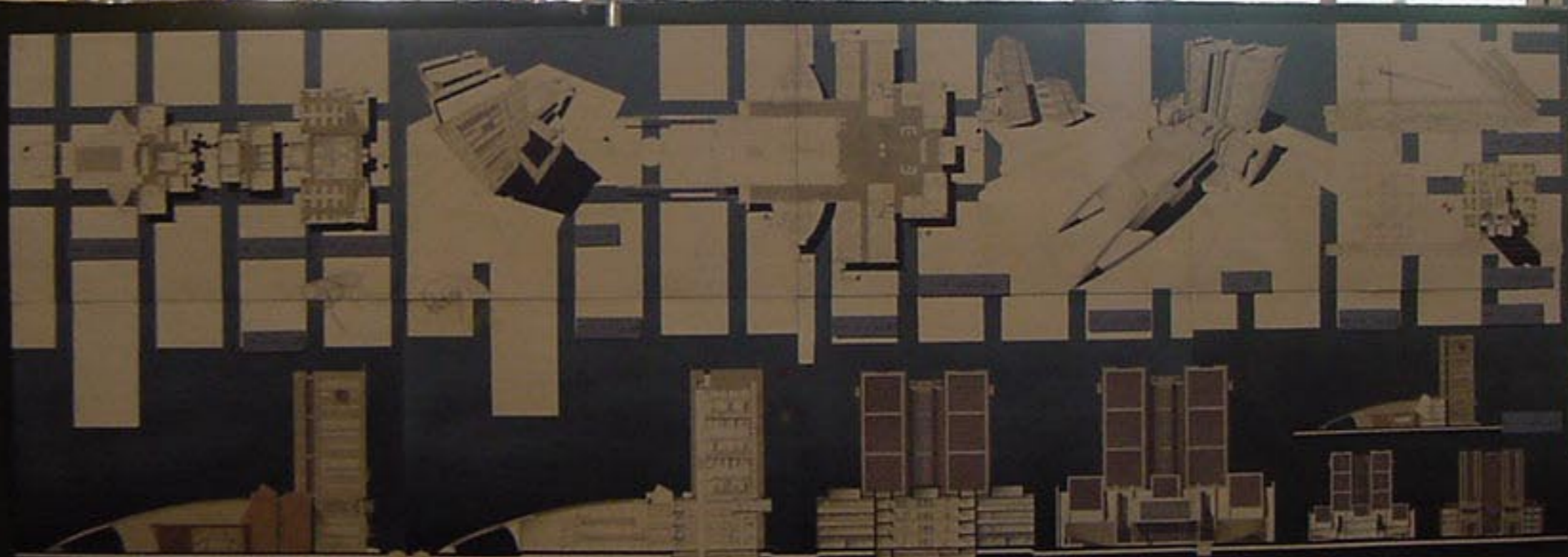
القصر D-D 1/200



البرج - الجنوبية 1/200







به سفارش  
موسسه شهرداری  
استاد گنجینه  
معماری  
معماری

