

جامعة دمشق
كلية الهندسة المعمارية
مشروع التخرج

مشروع إعادة تأهيل قلعة دمشق

تقديم

يامن زينة - بدور زينة

باشراف

د.م. رضوان طحلاوي

د.م. موفق دغمان

إعادة تأهيل قلعة دمشق

Rehabilitation & Re-functioning of the CITADEL OF DAMASCUS the **MEDIUM**



History
Da Vinci
Renaissance
Why does the eye see a thing more clearly in dreams than insight when awake?
Where the spirit does not work with the hand, there is no art.
Time stays long enough for anyone who will wait it.
Art is never finished, only abandoned.
Furniture never breaks her back, but, nothing strengthens a man so much as silence.
The human foot is a masterpiece of engineering and a work of art.

Archaeological Park

Anticipate the difficult by managing the easy.
From wonder into wonder existence opens.
None to be wild - time to engage it.
"We put thirty spokes together and call it a wheel, but it is in the space that there's nothing that the utility of the wheel depends upon."
The Yarn-clay to make a vessel. But it is in the space that there's nothing that the utility of the vessel depends upon.
The general doors and windows to make a house, and it is in these spaces where there's nothing that the utility of the house depends upon.
Therefore, just as we take a vessel to, we should manage what is not."
LAP 120
Sun Ya Ching
4th century B.C.

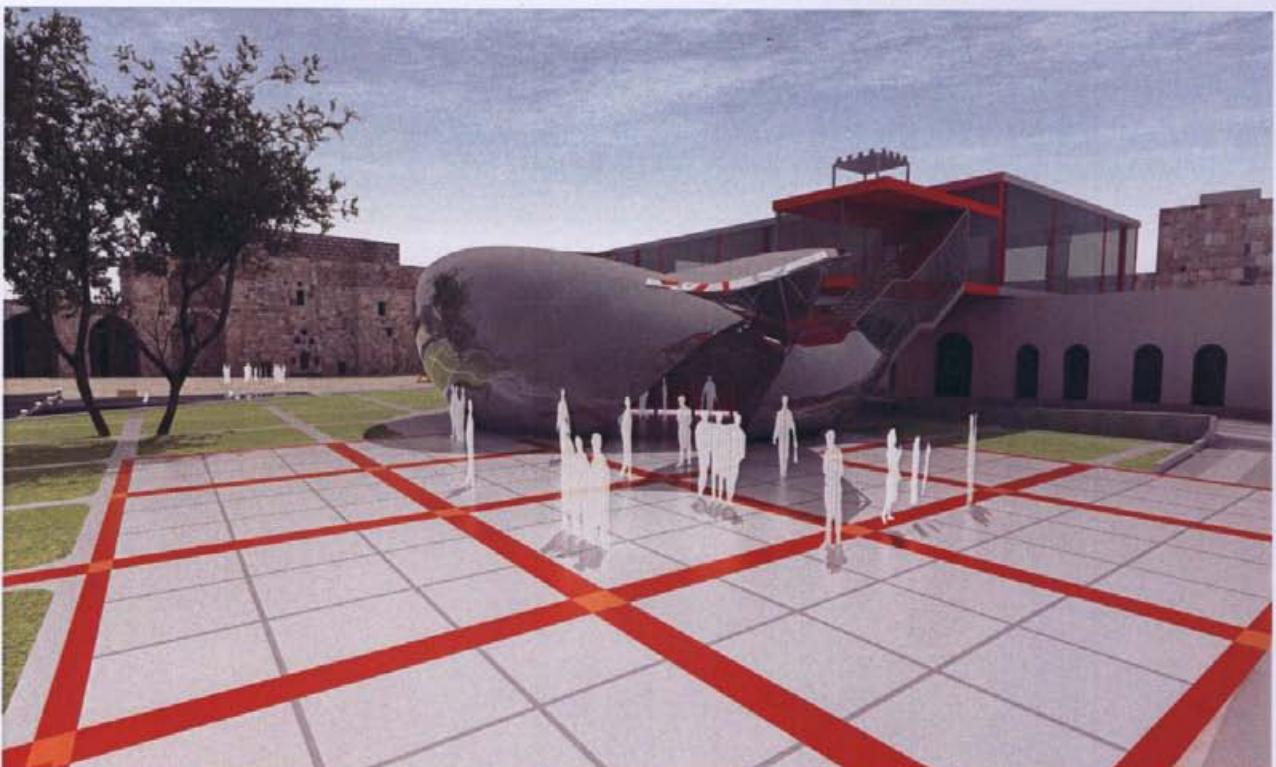
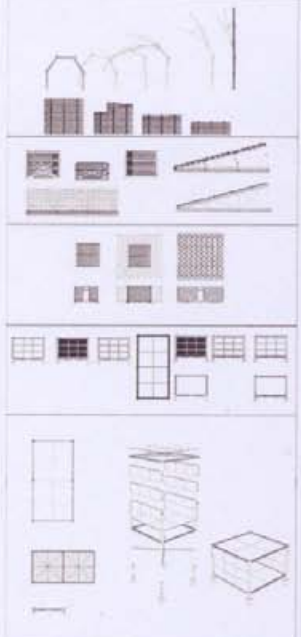
道
Phenomenology



Bazaar

Time space
E=mc²
20th century
Einstein
Spring
Relativity
Festival

Deconstruction
Signs
Medium



The Medium that contains many contradictions the space differentiates and the concept does so I am acting like an actor in a play that have to perform a kind of a scenario already written (according to the site) but in some cases he should improvise to perform his own drama the space has an energetic value which gives its own aspects. The conceptual soul of the architect is no longer a kind of a virus that spreads inside and outside just to play the role of an infection every action should be reversible and retractable to simulate the archeological layers zipping and unzipping layers to perform a dramatical play with interactive architectural elements the missing ring in the chain is how can I let the audience: 1. observe

2-learn

3-participate

4-perform

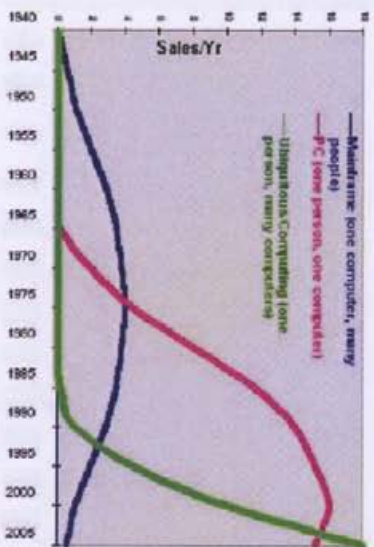
5-improvise

Michael A. Fox
Kinetic Design Group

„If architects designed a building like a body“
it would have a system of bones and muscles and tendons
. and a brain that knows how to respond

If a building could change its posture, tighten its muscles and brace itself against the wind, its structural mass could -literally be cut in half.“ Guy Nordenson, Ove Arup and Partners

If a building could mediate our needs and the environment outside: Its demand on physical resources could be slashed.
If it could transform to facilitate multi-uses: Its function would be optimized. If a building could adapt to our desires: It
“. would shape our experience
Anonymous-



:Kinetic wall

Imagine a membrane or enclosure system that is at once both structure and envelope, both solid and plastic, a super-skin that could be used either as a temporary structure or incorporated into an existing structure. This enclosure system must be highly flexible as a delineator of space and go easily from one plastic configuration to another, yet still retain solid structurally stable positions. Domed structures could easily satisfy one criteria of such a ground area, and must retain uniform shape. Could a structure be developed that is a hybrid between domed structured and conventional planar structural systems

/ This study explores both the tectonic feasibility of such a structure and a digital visualization
. Representation of its elemental attributes; joint termination, stresses, loads, modular expansion and form
Pryant P.Yeh

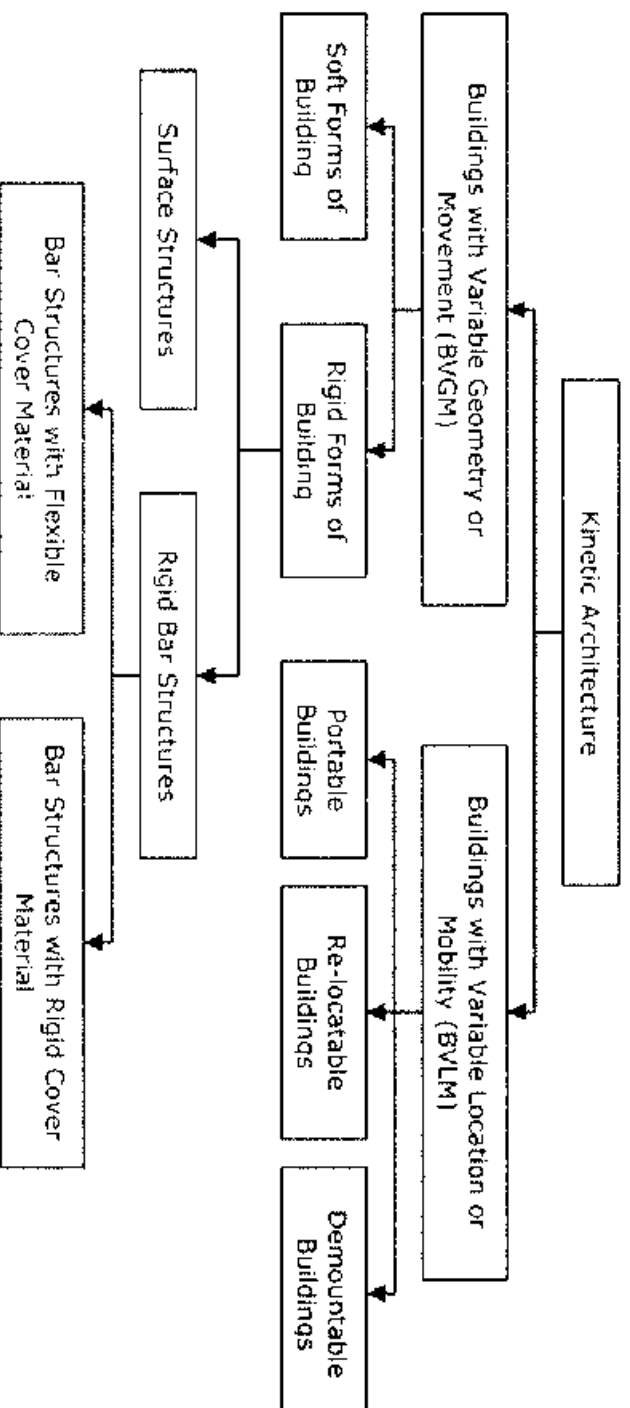


Figure 1 - Major Classification of Kinetic Architecture (Korkmaz, 2004)

Folding Structure

I have developed the work presented here over the last seven years. Unique hybrids of both structure and mechanism, folding structures are "shapes that grow themselves" -fluidly transforming from tight and compact bundles to strong yet graceful structural elements. The possible forms and functions of these folding structures are virtually unlimited.

* Uses for them currently are being explored in the areas of toys, tents, packaging, architecture, and outer space

.By Chuck Hoberman

:1-Continuous Surface system

This system is suited for smaller shelters and tents.

Numerous shapes can be generated from a single sheet of material. Manufacture is inexpensive, and structure may be made waterproof. Allowance is made

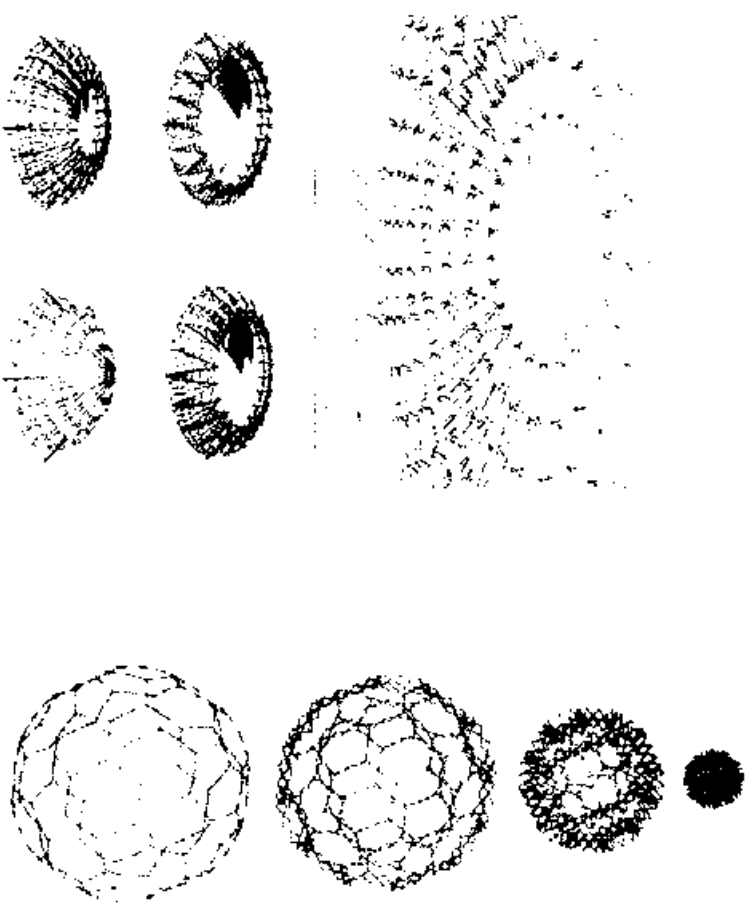


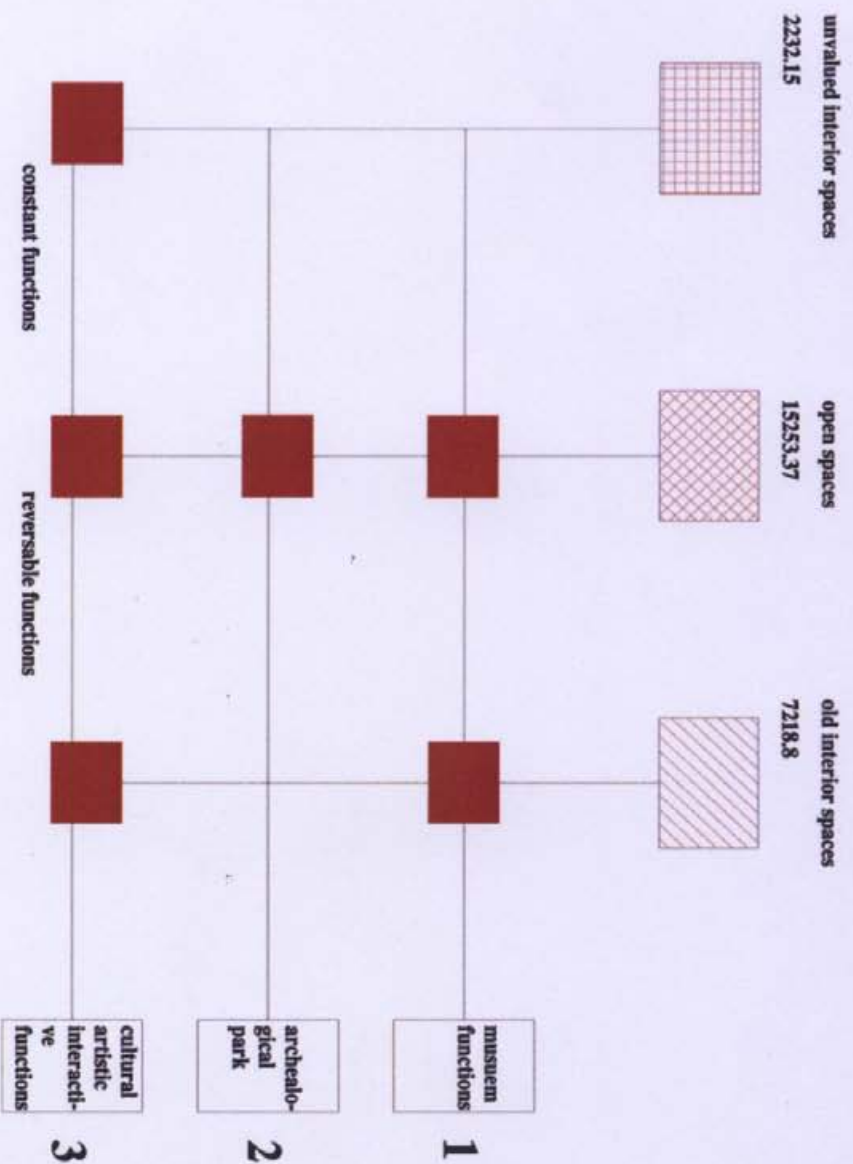
2-Radial Expansion Truss

This is a highly flexible system, whose structures exhibit smooth, stable expansion and contraction. One can design a collapsible truss of virtually any shape. Whatever the specified shape, it does not change as the truss is expanded and contracted. For example, a hemispherical dome will remain self-supporting at all times during deployment. As the structure expands, each point on its surface radiates out from the center. These straight-line trajectories easily may be used to expand and contract the structure with a winch or similar device.

3-Iris-Type Retractable Roof (Radial Expansion Truss with Covering)

Like an iris, the roof opens over a space in a symmetric fashion, with its center retracting toward its perimeter. As it retracts, the roof material also compacts, so that the circumference of the roof always remains essentially unchanged. This stable grounded perimeter is a key structural characteristic of the system. The roof may also be set in any intermediate position to provide a space that can adapt to many different uses.





البرامج الوظيفي

3- وظائف ثابتة

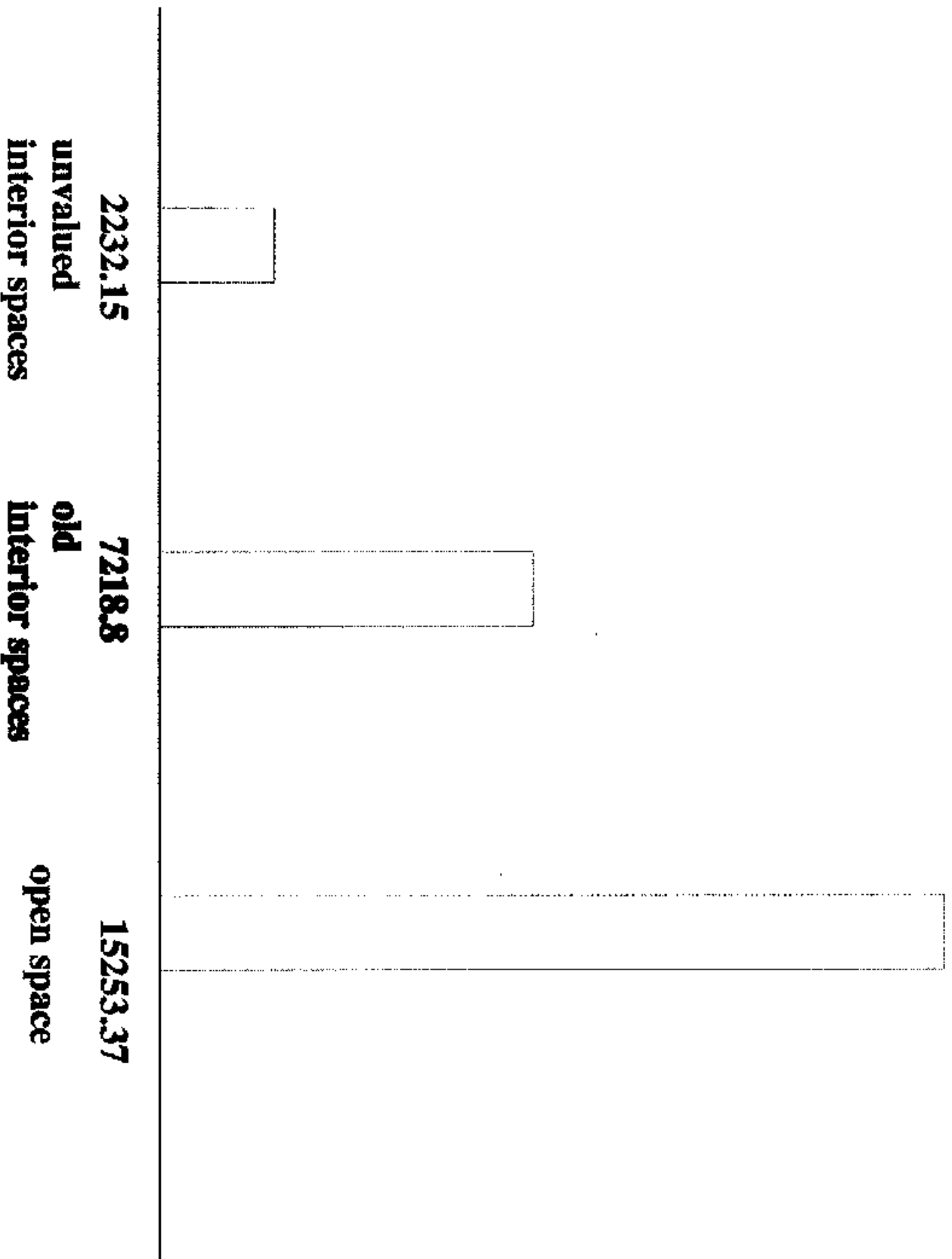
- قاعة مؤتمرات عالية مترافقة مع فراغات شعبية
- صالة استقبال الشخصيات الهامة
- مركز مهرجانات يجعل من قلعة دمشق احتفالية ليلية دمشق
- سيمتا ثقافية
- مكتبة ثقافية
- ورشات عمل حرفية مع مكاتب ادارية خاصة بها
- فراغات تقيف الازي
- مقهى شعبي
- كالمينيرا مع خدماتها
- استبيومات للمؤثرات الصوتية والبصرية
- فراغات ادارية
- خدمات عامة
- فراغات كوبريا وندفلة وصيانة

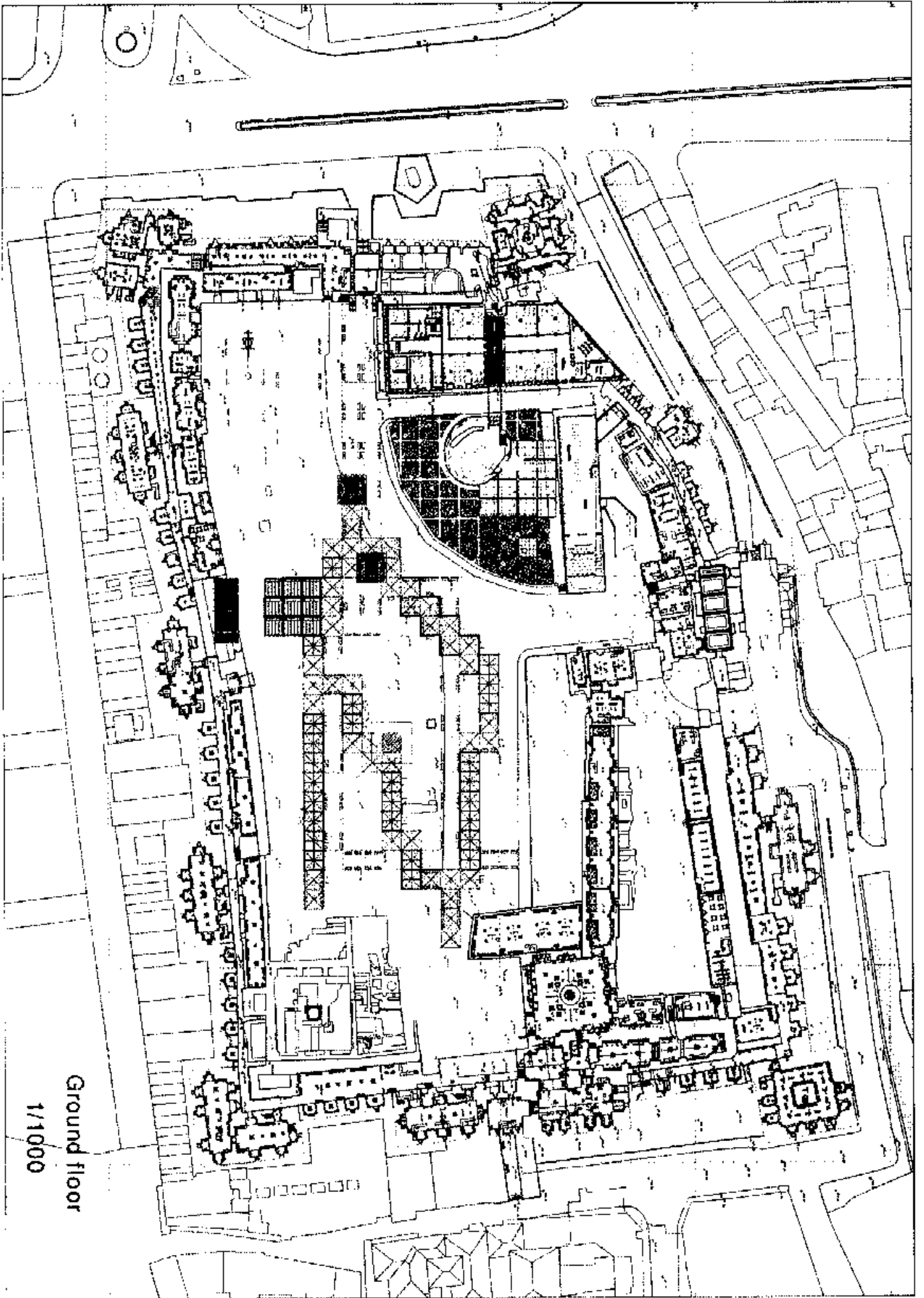
2- وظائف مؤقتة

- محصة لاقامة حفلات الغناء والرقص والمسرحيات المنصوص ارجال
- ساحات اجتماعية تحتوي وظائف محددة: اجتماعات اجتماعية
- حرات حركة فهد بوظائف متغيرة ومؤقتة اصحاب شعبية ثقافية
- تعرف بالتقاليد الشعبية ليلية دمشق وقد تتضمن عروض لجانين
- اكالات شعبية- عطارين- البسة والقمشة شعبية- تذكارات وهدايا
- عروض فنلن وحنانين في الهواء الطلق وعروض ارجالية ثقافية
- اشكال تقنيات للمتاحف الطائرة
- حديقة شامية

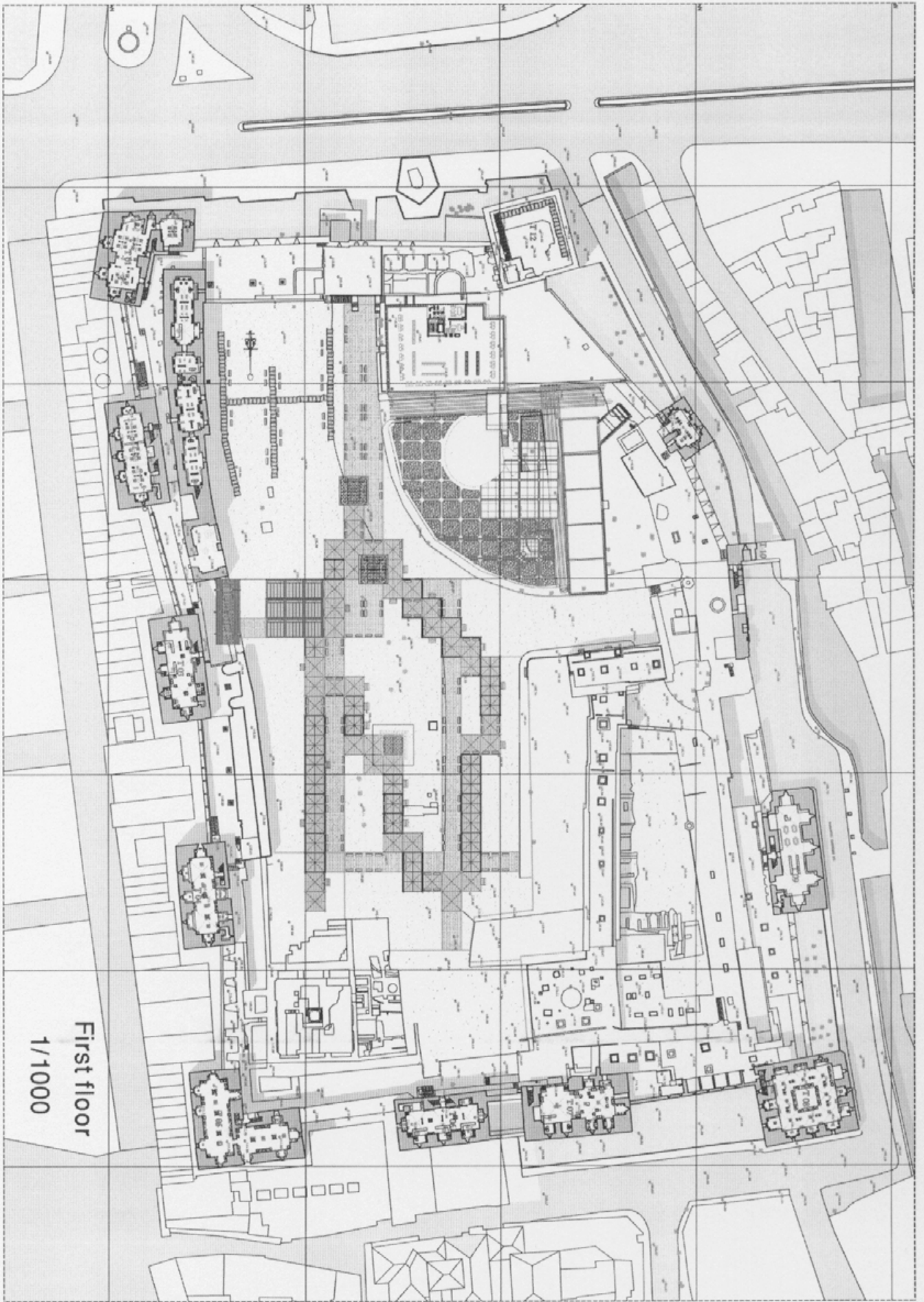
1- الوظائف التحفيلية والمعارض

- متحف القلعة التاريخي
- متحف اللقى الأثرية
- متحف طائر
- متحف الفرائضي
- متاحف متنقلة
- معارض دائمة ومؤقتة
- فراغ وادي تاملني
- فراغات ادارية وامنية
- خدمات عامة

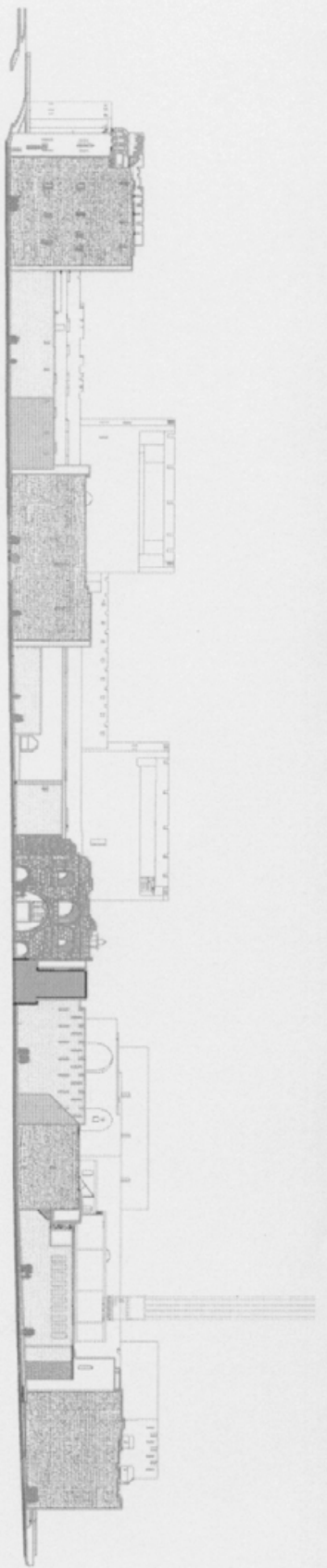




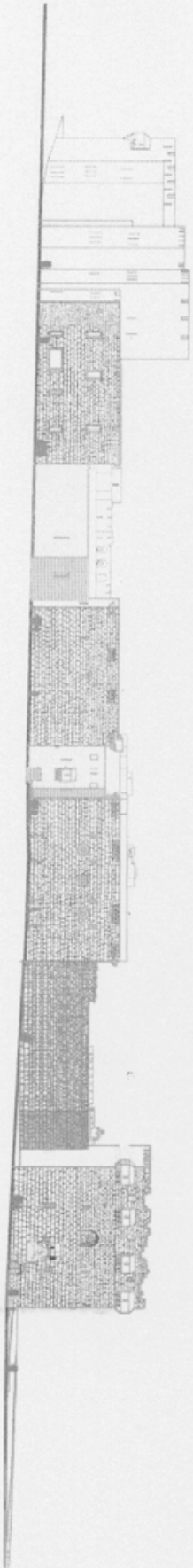
Ground floor
1/1000



First floor
1/1000



North elevation
1/1000



East elevation
1/1000

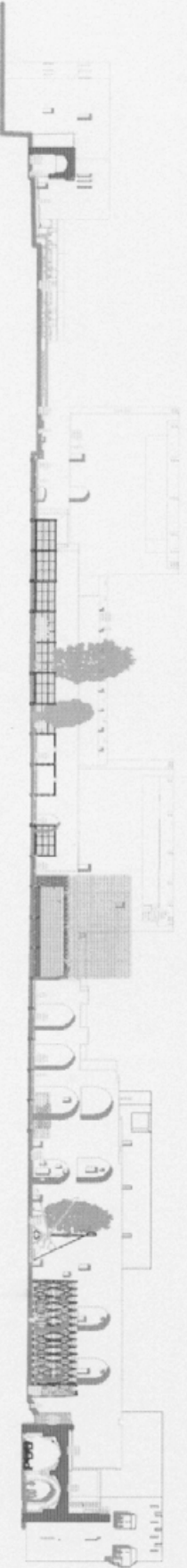


West elevation
1/1000



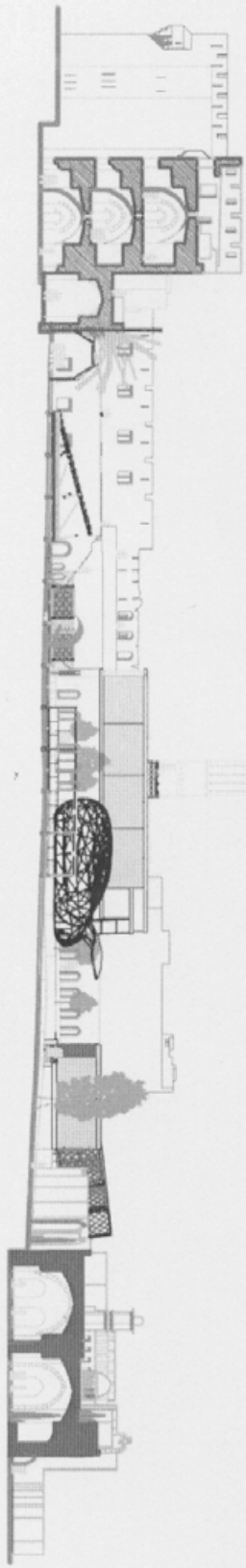
North section

1/1000



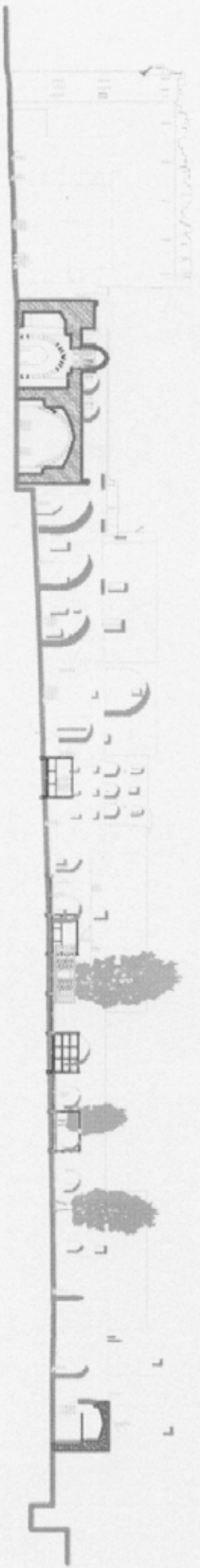
South section

1/1000



East section

1/1000



West section

1/1000

:Kinetic wall

Imagine a membrane or enclosure system that is at once both structure and envelope, both solid and plastic, a super-skin that could be used either as a temporary structure or incorporated into an existing structure. This enclosure system must be highly flexible as a delineator of space and go easily from one plastic configuration to another, yet still retain solid structurally stable positions. Domed structures could easily satisfy one criteria of such a ground area, and must retain uniform shape. Could a structure be developed that is a hybrid between domed structured and conventional planar structural systems

/ This study explores both the tectonic feasibility of such a structure and a digital visualization

.Representation of its elemental attributes; joint termination, stresses, loads, modular expansion and form

Pryant P.Yeh

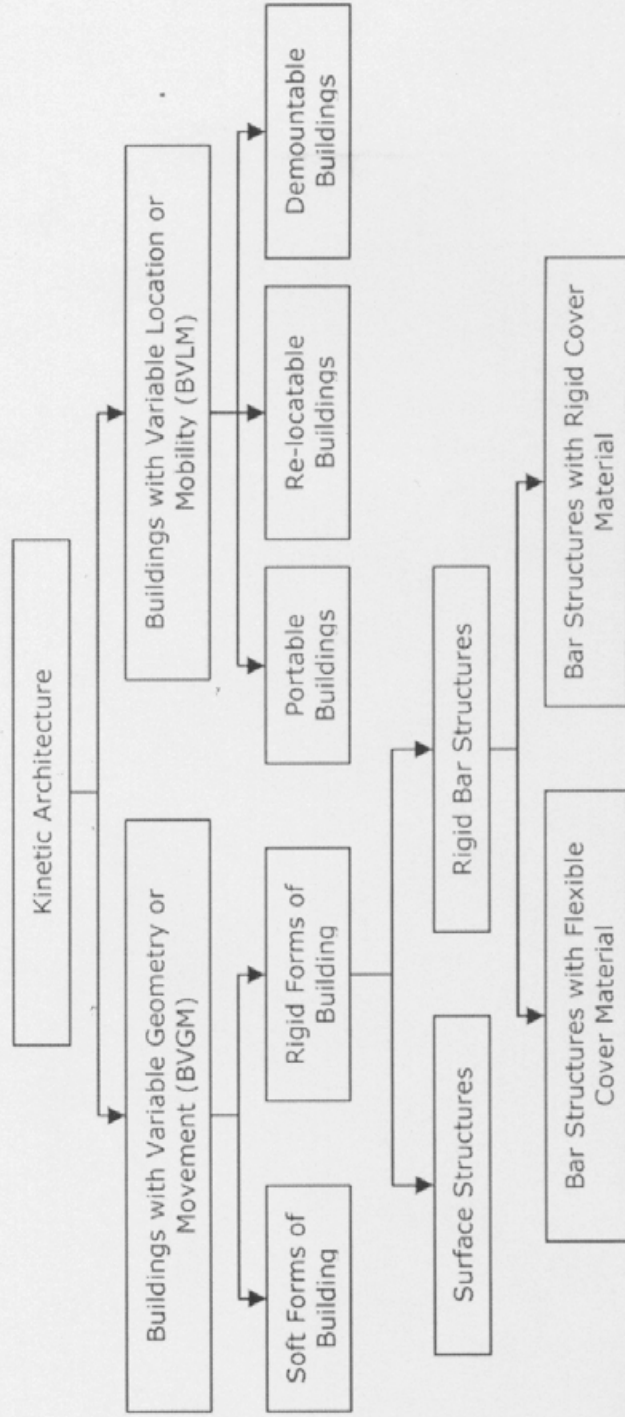


Figure 1 - Major Classification of Kinetic Architecture (Korkmaz, 2004)